



BORMA WACHS[®]
Wood Professional Cosmetics
& Eco-Finishes

INTERIORS





Company

We manufacture professional wood cosmetics for an eco-friendly way of life.

For decades BORMA WACHS has been working in the wood care and synthetic surface treatment sector with a sense of responsibility and constant commitment to pursuing three fundamental principles: quality, reliability and flexibility. The dynamism, production capacity, safety and marketability of our products characterise our company profile. As specialists in the professional cosmetics of wood and synthetic surfaces, we offer our customers only the best of the best.



Certifications

Our products and manufacturing cycles are regularly tested and approved by international institutes.



VOC FREE

All Borma Wachs branded products comply with the latest European legislation on emissions of potentially harmful substances into the atmosphere and have total regard for the environment and the health and wellbeing of our workers and our customers. With the new ECO PREMIUM - VOC FREE line we are able to offer an uncompromising range, with 100% natural and biodegradable products, with a VOC content reduced to zero.



IBR CERTIFICATIONS

Borma Wachs products are tested and approved by the Rosenheim Institute for Green Building. The analyses carried out certify our products regarding the content of VOC's, biocides, heavy metals and radioactive material guaranteeing their eco-compatibility with the principles of Green Building. The Company always aims to understand the needs and sensitivity of customers, trying to better interpret the request for sustainable and environmentally friendly treatments coming from the use of renewable raw materials, in order to reduce as much as possible the impact on environment and on the health of users and all stakeholders in our communities.



EN71.III CERTIFICATION

The Danish laboratories of Eurofins have recognised the compliance of Borma Wachs oils with the EN 71- III regulation on the migration of heavy metals harmful to health, ensuring the safety of the treatments to the point of allowing their use for finishing or maintenance of toys for children.

Interiors

Natural Wood Feeling, Resistance and Durability

Natural wood feeling, resistance and durability. The highly esteemed oils for interiors appeared due to Borma's historic experience in natural wax working. They put parquet under the spotlight emphasising wood's true beauty and consist of precious raw materials of natural origin. Borma interior oils combine high performance with ease of application and maintenance and unlimited colouration.



INDEX

Page 6/11

Preparation & Colouring

Page 12/19

Basecoats & Topcoats for Parquet

Page 20/23

Cleaning & Maintenance for Parquet

Page 24/27

Basecoats & Topcoats for Furniture

Page 28/31

Cleaning & Maintenance for Furniture

Page 32/33

IG Pure



PREPARATION & COLOURING

The colour of the parquet or of furniture represents the core of the finish, establishes it and determines its character. The ageing vehicles, reacting with the tannin, enhance the structure of the wood to the maximum, giving a unique and strongly characterised appearance, to be protected with oils for high impact effects. The positive stains, on the contrary, provide soft and uniform tones, emphasising the grain without excessive contrasts and are perfectly matched with the waxed finishes. The universal dyes are distinguished by their exceptional brightness and quick drying and are recognised as ideal for traditional furniture. The oils, semi-transparent and easy to spread, are dedicated to the colouring of large areas, even in the case of timbers that are typically difficult to dye. They deeply impregnate the wood giving a first important protection and, containing mineral pigments, are naturally resistant to light.



Ageing Vehicle HOLZ ANTIX 2008

This waterbased colourless reacting vehicle is used on wood with high tannin-content to get an immediate aging effect. The intensity of the effect (the darkening of the colour) depends on the natural level or content of the tannin in the timber. The product is not a dye. It can be tinted by adding the Waterbased Mordant Concentrates. If directly overcoated with waterbased products it can react with it giving poor adhesion and inhomogeneities in the film, therefore we recommend the application of products from our Parquet Oil range, and afterwards, if required, apply a waterbased finish.



Recommendations for application:

Apply the product on raw wood using synthetic brushes or sponges or, on wide areas, using a spreader. Suitable also for spraying and industrial lines. A preliminary test is always recommended to verify the result, which mainly depends on the kind of wood. To get a lighter effect dilute the product in water accordingly.
Approx. yield: 20-30 m²/Lt



VIEW AT THE APPLICATION VIDEO!



Code	Desc.	Pack.
3720	1 Lt.	12 pcs.
3721	5 Lt.	02 pcs.
3722	25 Lt.	

Ageing Vehicle HOLZ ANTIX 2010

This natural reagent is used on tannin-rich types of wood to achieve an instant grey ageing effect. The intensity of the effect, that can vary from light grey to dark grey with bluish shades, depends on the original characteristics of the wood. The product is not a dye. If directly overcoated with waterbased products it can give unwanted phenomena. We recommend therefore to proceed with the use of products from our Parquet Oil range and afterwards, if required, to apply a waterbased finish.



Recommendations for application:

Apply the product on raw wood using synthetic brushes or sponges or, on wide areas, using a spreader. Suitable also for spraying and industrial lines. A preliminary test is always recommended to verify the result, which mainly depends on the kind of wood. To get a lighter effect dilute the product in water accordingly.
Approx. yield: 20-30 m²/Lt.



VIEW AT THE APPLICATION VIDEO!



Code	Desc.	Pack.
3724	1 Lt	12 pcs.
3725	5 Lt	02 pcs.
3726	25 Lt	

Whitening Vehicle HARD WOOD LYE

This waterbased product lightens the colour of raw wood and neutralises the effect of the two aging vehicles Holz Antix 2008 and Holz Antix 2010, returning the colour back to the original one. To avoid unwanted effects, we recommend overcoating with products from our Parquet Oil Range and afterwards, if required, applying a waterbased finish.



Recommendations for application:

Apply the product on raw wood or on surfaces that were treated with Holz Antix 2008 or 2010 using synthetic brushes or sponges or, on wide areas, using a spreader. A preliminary test is always recommended to verify the result. Suitable also for use on oak wood. Approx. yield: 20-30 m²/Lt.



Code	Desc.	Pack.
0075HW	1Lt	12 pcs.
0076HW	5 Lt	02 pcs.
0077HW	25 Lt	

Waterbased vehicle for Positive Stains TP1050

Waterbased vehicle to be tinted with the Mordant Stain concentrates (CW series) for the preparation of positive stains, for wooden furniture and floorings. It is an ideal solution for strongly enhancing the structure of the wood, with a natural and easy-to-obtain vintage effect. Ideal for conifer wood (fir).



Recommendations for application:

Apply to raw wood. After the surface is completely dry, apply a waxy finish or an oil from Borma Interiors range.
Approx. yield: 14-20 m²/Lt.



Code	Desc.	Pack.
COTP1051	1Lt	12 pcs.
COTP1050	5 Lt	02 pcs.
COTP1050.20	25 Lt	
COTP1050.120		



PREPARATION & COLOURING

Concentrate Stains

WATERBASED MORDANT ACTIVE STAIN CONCENTRATES

Liquid dyes in water solution specifically used for the staining of raw wood. To be used in combination with Holz Antix 2008 or TP1050 Vehicle for Positive Stains. They provide effects of great transparency and depth. Available in the Colour Chart assortment.



Recommendations for application:

The concentrates are provided in 100ml packaging. This quantity has to be added to 1Lt of Holz Antix 2008 or 1Lt of TP1050 vehicle to get a reactive aging stain or a positive stain. The colour may vary depending on the treated surface.



Code	Desc.	Pack.
CW2XXX	100 ml	12 pcs.

Vintage Reactive Stains colour chart (Holz Antix 2008 + Mordant Concentrates CW)



14/56 ANT Ivory



14/6 ANT Beige



14/9 ANT Silica



14/37 ANT Silk Grey



14/12 ANT Olive



14/38 ANT Quartz



14/10 ANT Stone



14/4 ANT Aged Brown



14/2 ANT Aged



14/14 ANT Cognac



14/1 ANT Natural



14/46 ANT Dark Aged Brown



14/21 ANT Dark



14/22 ANT Burnt Wood



14/13 ANT Aged Pink



14/44 ANT Rust



14/47 ANT Dark Rust



14/17 ANT Colonial Rosewood



14/53 ANT Green



14/57 ANT Emerald



Coloured Oils

GRUNDIEROEL COLOROIL

A ready-to-use blend of natural oils and high quality resins for the preliminary treatment of wooden surfaces. Its fluidity ensures excellent penetration and uniform wetting to enable a simple and straightforward staining process prior to finishing.



Recommendations for application:

Available in the clear version and in the colour chart assortment, it can be customized with the tinting system. Suitable for brush, rag, roller and spray applications we recommend completion the finishing cycle with products of the Parquet Range (oils, waterbased or classical lacquers, waxes) Approx yield: 14-26 m²/Lt.



Customizable with Borma Colour System



Converter for Tinting System		
Code	Desc.	Pack.
3910.750	750 ml	06 pcs.
3950.4	4 Lt.	02 pcs.
3960.8	8 Lt.	02 pcs.
3960.16	16 Lt.	

Code	Desc.	Pack.
3910XX	1L	06 pcs.
3950XX	5L	02 pcs.
3960XX	10L	
3960.20	20L	

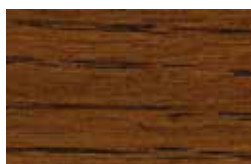
Grundieroel Colour Chart



05 Pine



107 Grey Oak



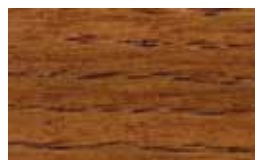
52 Dark Oak



53 Light Walnut



50 Natural white



29 Light Cherry



62 Mahogany



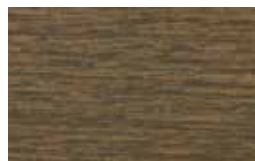
63 Dark Walnut



59 Medium Walnut



58 Rosewood



M8147 Rustic Oak



M10098 Black





PREPARATION & COLOURING

Universal Stain Concentrate HOLZFARBE

A universal liquid stain concentrate ideal for staining raw furniture and other interior surfaces. It replaces the traditional aniline dyes thus avoiding the preparation procedure and the potential inhalation of harmful powders. The concentrates can be used as supplied to achieve very intense colours or can be diluted up to 1:6 ratio with water, alcohol, acetone or NC thinner to get lighter effects. The resulting stain imparts great depth, tone and grain definition and enhances all types of wood prior to finishing. The concentrate can be used also to tint transparent lacquers.



Recommendations for application:

When tinting clear lacquers be cautious due to the strength and add drop by drop to avoid too intense colours. Always make a preliminary test to verify the final effect.



Code	Desc.	Pack.
3000XX	250 ml	12 pcs.
3050XX	500 ml	12 pcs.
3100XX	1 Lt	12 pcs.
3005XX	5 Lt	02 pcs.

Holzfarbe Colour Chart (Also Available: 30 Cherry , 59 Medium Walnut, 146 Wenge)

120 Yellow



134 Green



122 Orange



125 Fire Red



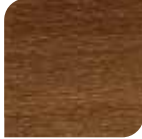
52 Oak



17 Teak



53 Light Walnut



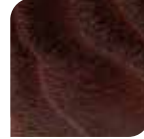
62 Mahogany



63 Light Walnut



58 Rosewood



140 Blue



60 Black



Universal Stain Concentrate /Interiors and Exteriors Naturaqua HOLZFARBE

A Special water based liquid stain of high strength and light resistance used to colour directly raw wood as well to Tint Basecoats or Topcoats of the NATURAQUA RANGE. Due to its particular formula the stain can be used for Interior as Exterior projects, keeping a good colour brightness till a maximum suggested dilution ratio 1-1. Ready for use can be diluted with water, alcohol, acetone and other polar solvents, once dry allows to be overcoated with any type of lacquer waterborne, thinner based or PU.



Recommendations for application:

When tinting clear lacquers be cautious due to the strength to add drop by drop to avoid too intense colours. Always make a preliminary test to verify the final effect.

Code	Desc.	Pack.
NAT3000XX	250 ml	12 pcs.
NAT3000XX.1	1 Lt	12 pcs.
NAT3000XX.5	5 Lt	02 pcs.
NAT3000XX.20	20 Lt	

Naturaqua Holzfarbe Colour Chart (Also Available: 30 Cherry, 59 Medium Walnut , 146 Wenge)

120 Yellow



134 Green



122 Orange



125 Fire Red



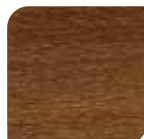
52 Oak



17 Teak



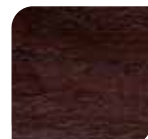
53 Light Walnut



62 Mahogany



63 Dark Walnut



58 Rosewood



140 Blue



60 Black



A young boy with a joyful expression is the central focus of the image. He is wearing a blue and black plaid shirt and a black helmet with clear goggles resting on his forehead. He is standing on a light-colored wooden floor with a prominent grain. The background is a soft, out-of-focus white wall. The overall mood is bright and positive.

BASECOATS & TOPCOATS FOR PARQUET

In the Parquet Oils world Borma offers a solution to every need: drying times differentiated according to the application conditions, VOC-free formulations, products based on natural raw materials, obtained from renewable sources and dedicated to professionals, always in an ideal balance between ecology and performance. Even in lacquers, the options are wide and varied: single-component or catalysed, traditional or water-based, that meet all aesthetic and functional expectations. All finishing products come in multiple gloss variants to create both modern, extremely natural effects and more classic and decorative finishes. Use of the specific basecoats ensures the best result and optimum consumption on any type of background.



Self Sealing Oil PARQUET OIL QUICK

A blend of valuable vegetable oils, reinforced with high quality resins, for the finishing of untreated interior wooden surfaces. It provides an excellent resistance to stains and wear, does not need specific basecoats and is supplied ready for use. Available in the following gloss levels: Deep Matt 10% - Matt 30% - Semi-gloss 60% - Gloss 90%. Available also in the Hardwax "1030" version, with Natural Matt effect. Traditional fast drying, low viscosity formulation.



Recommendations for application:

The product can be applied by brush, roller, rag, spray or on industrial lines. Always provide proper ventilation to the treated areas to allow the correct drying process of the oil.
Approx. yield: 12-24 m²/Lt.



Customizable with Borma Colour System



Parquet Oil Quick		
Code	Desc.	Pack.
4951-XX	1 Lt	06 pcs.
4952-XX	5 Lt	02 pcs.
4953-XX	10 Lt	
4954-XX	20 Lt	

Hardwax Parquet Oil Quick 1030		
Code	Desc.	Pack.
4951-HW	1 Lt	06 pcs.
4952-HW	5 Lt	02 pcs.
4953-HW	10 Lt	
4954-HW	20 Lt	

Self Sealing Oil PARQUET OIL PLUS

Blend of valuable vegetable oils, reinforced with high quality resins, for the finishing of untreated interior wooden surfaces. It provides an excellent resistance to stains and wear, does not need specific basecoats and is supplied ready for use. Available in the following gloss levels: Deep Matt 10% - Matt 30% - Semi gloss 60% - Gloss 90%. Available also in the Hardwax "1030" version, with natural matt effect. New medium drying, high viscosity, easy-flow formulation. Not designated flammable for ADR.



Recommendations for application:

The product can be applied by brush, roller, rag, spray or on industrial lines. Always provide proper ventilation to the treated areas to allow the correct drying process of the oil.
Approx. yield: 12-26 m²/Lt.



Customizable with Borma Colour System



Parquet Oil Plus		
Code	Desc.	Pack.
4951-XX.PLS	1 Lt	06 pcs.
4952-XX.PLS	5 Lt	02 pcs.
4953-XX.PLS	10 Lt	
4954-XX.PLS	20 Lt	

Hardwax Parquet Oil Plus 1030		
Code	Desc.	Pack.
4951-HW.PLS	1 Lt	06 pcs.
4952-HW.PLS	5 Lt	02 pcs.
4953-HW.PLS	10 Lt	
4954-HW.PLS	20 Lt	

Self Sealing Oil PARQUET OIL PRO

Blend of valuable vegetable oils, reinforced with high quality resins, for the finishing of untreated interior wooden surfaces. It provides an excellent resistance to stains and wear, does not need specific basecoats and is supplied ready for use. Has natural satin effect, if applied by a buffing machine. For brush and spray application is available in 10, 30, 60 and 90 gloss.. It has a high solid, slower drying, ultra-flow formulation for application with rotating buffing machine. Not designated flammable for ADR.



Recommendations for application:

The product can be applied by brush, roller, rag, spray or on industrial lines. Always provide proper ventilation to the treated areas to allow the correct drying process of the oil.
Approx. yield: 12-26 m²/Lt.



Customizable with Borma Colour System



Code	Desc.	Pack.
4951-XX.PRO	1 Lt	06 pcs.
4952-XX.PRO	5 Lt	02 pcs.
4953-XX.PRO	10 Lt	
4954-XX.PRO	20 Lt	

BASECOATS AND TOPCOATS FOR PARQUET

Self-Sealing Oil, Minimal Natural Yellowing HARDWAX COLOROIL

Based on natural oils, reinforced with high quality resins, for the finishing of wooden floors; specifically to keep an extremely neutral tone. It can be used also for doors, skirtings and other wooden items. Interior use.

White: specifically formulated to provide an intense white colour to the wooden surfaces, keeping a natural finish. Based on resin-reinforced oils and light-resistant pigments, it has a slow oxidative drying process and is ideal for white finishes.

Transparent: specifically developed for the final protection of Hardwax Coloroil White. Slow-oxidative drying, it provides an excellent natural finish and does not affect the original Coloroil hue.

Available also in the Quick version, fast drying and particularly suitable for manual applications.



Recommendations for application:

Hardwax Coloroil White can be applied by roller or by brush for covering finishes or can be ragged off for decapé finishes. For the final protection we recommend Hardwax Coloroil Transparent. Approx. yield: Hardwax Coloroil 12-24m²/Lt - Hardwax Coloroil white quick 12-14m²/Lt

Hardwax Coloroil White			Hardwax Coloroil White Quick			Hardwax Coloroil Transparent			Hardwax Coloroil Transparent Quick		
Code	Desc.	Pack.	Code	Desc.	Pack.	Code	Desc.	Pack.	Code	Desc.	Pack.
4992B.1	1 Lt	06 pcs.	4992B.1QK	1 Lt.	06 pcs.	4992.1	1 Lt	06 pcs.	4992.1QK	1 Lt.	06 pcs.
4992B.5	5 Lt	02 pcs.	4992B.5QK	5 Lt.	02 pcs.	4992.5	5 Lt	02 pcs.	4992.5QK	5 Lt.	02 pcs.
4992B.10	10 Lt		4992B.10QK	10 Lt.		4992.10	10 Lt		4992.10QK	10 Lt.	
4992B.20	20 Lt		4992B.20QK	20 Lt.		4992.20	20 Lt		4992.20QK	20 Lt.	

Two-Component Oil PARQUET OIL 2K - HARDWAX PARQUET OIL 2K

A VOC-free, high performing blend of oils. Its special formulation makes it suitable for catalysis which reduces drying times and increases the surface resistance. When completely dried the product forms a thin film, with a natural touch, deeply nourishing and protecting the wood. Available also in Waxy version, HARDWAX PARQUET OIL 2K.

For Professional Use.



Recommendations for application:

Application by buffing machine, with catalysis ratio at 10% or 30%, depending on the traffic on the surface, if medium or high. Approx. yield: 30-50m²/Lt

Catalyst		Hardwax Parquet Oil 2K			Parquet Oil 2K		
Code	Desc.	Code	Desc.	Pack.	Code	Desc.	Pack.
4951K	100 ml	49512K-HW	1 Lt.	06 pcs.	49512K	1 Lt.	06 pcs.
4952K	250 ml	49522K-HW	2,5 Lt.	02 pcs.	49522K	2,5 Lt.	02 pcs.
4953K	500 ml	49532K-HW	5 Lt.	02 pcs.	49532K	5 Lt.	02 pcs.
4954K	1 Lt	49542K-HW	10 Lt.		49542K	10 Lt.	
4955K	2 Lt	49552K-HW	20 Lt.		49552K	20 Lt.	



Customizable with Borma Colour System

Self-Sealing Oil, 100% VOC free ECO PREMIUM PARQUET OIL HIGH SOLID - ECO PREMIUM PARQUET OIL

VOC-free, ecological oil ideal for the treatment of wooden floors, raw or stained.

Available also in the Finishing-Restoring version (Eco Premium Parquet Oil). It can be coloured on request with Borma Coloroil System or according to our Grundieroil Colourchart.



Recommendations for application:

Specific for the treatment of wide areas, application by buffing machine is suggested.

Approx yield: Eco Premium Parquet Oil HS: 16-24m²/Lt

Approx yield: Eco Premium Parquet Oil: 12-16m²/Lt



Customizable with Borma Colour System

Eco Premium Parquet Oil HS			Eco Premium Parquet Oil		
Code	Desc.	Pack.	Code	Desc.	Pack.
VOC4951HS	1 Lt	06 pcs.	VOC4951	1 Lt	06 pcs.
VOC4952HS	5 Lt	02 pcs.	VOC4952	5 Lt	02 pcs.
VOC4953HS	10 Lt		VOC4953	10 Lt	
VOC4954HS	20 Lt		VOC4954	20 Lt	



Insulating Basecoat for Exotic Woods NATURAQUA WOOD SEALER

An acrylic transparent insulator for interior and exterior use, ideal for oily woods and as a final 'fixing' coat for "natural effect" finishes. It creates an invisible film for a "raw wood" effect. Fields of application: It can be used as an insulator to ensure adhesion of waterbased finishes on exotic or oily woods or as a surface fixative for invisible finishes.



Recommendations for application:

Catalyse the product with Borma NAT410X-2K at 10% ratio to improve the adhesion and the surface resistance. Approx. yield: 10-14m²/Lt.



Customizable with Borma Colour System

CATALYST NAT4100-2K		
Code	Desc.	Pack.
NAT4099-2K	100 ml	12 pcs.
NAT4100-2K	250 ml	12 pcs.
NAT4101-2K	500 ml	12 pcs.
NAT4105-2K	1 Lt	06 pcs.
NAT4103-2K	2,5 Lt	02 pcs.
NAT4104-2K	5 Lt	02 pcs.

Code	Desc.	Pack.
NAT4090	750 ml	06 pcs.
NAT4091	5 Lt	02 pcs.
NAT4090.10	10 Lt	
NAT4090.20	20 Lt	

Anti-tannin Insulator NATURAQUA SUPER WOOD SEALER

Waterbased insulator specific as anti-tannin barrier, non yellowing. It prevents tannin from rising to the surface and allows overcoating with waterbased finishes, avoiding unwanted yellow or brown spots.



Recommendations for application:

Available in transparent and opaque White, ideal for finishes in light colours. When applied in two coats, it does not require any further basecoats before the topcoat. Approx yield: 10-14m²/Lt



Customizable with Borma Colour System

WHITE		
Code	Desc.	Pack.
NAT4090B-S	750 ml	06 pcs.
NAT4091B-S	5 Lt	02 pcs.
NAT4090.10B-S	10 Lt	
NAT4090.20B-S	20 Lt	

TRANSPARENT		
Code	Desc.	Pack.
NAT4090-S	750 ml	06 pcs.
NAT4091-S	5 Lt	02 pcs.
NAT4090.10-S	10 Lt	
NAT4090.20-S	20 Lt	

1-2K WATERBASED BASECOAT FOR PARQUET

Waterbased basecoat for the treatment of wooden floors. Supplied ready for use, it can be applied directly on raw wood. Its special viscosity and workability allow the optimum preparation of parquet floors prior to the application of Naturaqua Parkettlack topcoats.



Recommendations for application:

If a higher hardness is required, the product can be catalysed 10:1 with NAT410X-2K Hardener for waterbased lacquers. Approx yield: 10-14m²/Lt.

Code	Desc.	Pack.
NAT4140	1 Lt	06 pcs.
NAT4141	5 Lt	02 pcs.
NAT4142	10 Lt	
NAT4143	20 Lt	

Waterbased Lacquer for Parquet 1-2K NATURAQUA PARKETTLACK

A waterbased, eco-friendly, high performance lacquer for the treatment of parquet. It can be used as single component or catalysed 10:1 with NAT410X-2K Hardener. It respects environmental legislation and workers' health and safety. It provides high levels of protection against wear and abrasion on traditional wooden floors, pre-sanded or to be restored. High performance with the comfort of a single component or catalysed technology. Available in deep matt, matt, semi-gloss and glossy sheen levels.



Recommendations for application:

The product can be applied by brush or roller directly on sanded raw wood or over a Waterbased Basecoat. Naturaqua Parkettlack can also be applied on oil-based basecoats or finishes from Borma range. Approx yield: 10-14m²/Lt.

CATALYST NAT4100-2K		
Code	Desc.	Pack.
NAT4099-2K	100 ml	12 pcs.
NAT4100-2K	250 ml	12 pcs.
NAT4101-2K	500 ml	12 pcs.
NAT4105-2K	1 Lt	06 pcs.
NAT4103-2K	2,5 Lt	02 pcs.
NAT4104-2K	5 Lt	02 pcs.

Code	Desc.	Pack.
NAT4100-XX	1 Lt	06 pcs.
NAT4101-XX	2,5 Lt	02 pcs.
NAT4102-XX	5 Lt	02 pcs.
NAT4103-XX	10 Lt	
NAT4104-XX	20 Lt	

BASECOATS AND TOPCOATS FOR PARQUET



Two Component High Performance Lacquer 2K NATURAQUA PARKETTLACK

Waterbased lacquer ideal for the treatment of wooden floors. It develops excellent levels of protection and mechanical performance in terms of wear, abrasion and stain resistance. Suitable for all types of wood, it does not necessarily require a specific primer. Available in deep matt, matt, semi-gloss and glossy sheen levels.



Recommendations for application:

To be used in combination with a hardener for waterborne lacquers in 10:1 ratio. For a glossy version (80-90 gloss) a specific catalyst should be used.
Approx yield: 10-12m²/Lt.

CATALYST FOR GLOSSY 80-90 GLOSS		
Code	Desc.	Pack.
NAT4107-2K-90	100 ml	12 pcs.
NAT4111-2K-90	250 ml	12 pcs.
NAT4108-2K-90	500 ml	12 pcs.
NAT4109-2K-90	1 Lt	12 pcs.

CATALYST NAT4100-2K		
Code	Desc.	Pack.
NAT4099-2K	100 ml	12 pcs.
NAT4100-2K	250 ml	12 pcs.
NAT4101-2K	500 ml	12 pcs.
NAT4105-2K	1 Lt	06 pcs.
NAT4103-2K	2,5 Lt	02 pcs.
NAT4104-2K	5 Lt	02 pcs.



Code	Desc.	Pack.
NAT41002K-XX	1 L t	06 pcs.
NAT41012K-XX	2,5 L t	02 pcs.
NAT41022K-XX	5 Lt	02 pcs.
NAT41032K-XX	10 Lt	
NAT41042K-XX	20 Lt	

CATALYST FOR WATERBASED LACQUERS 4100-2K

Hardener for Borma waterbased lacquers including Wood Sealer, Super Wood Sealer, 1-2K Waterbased Basecoat for Parquet, 1-2K Naturaqua Parkettlack and 1-2K Naturaqua Mobilack. It increases the level of chemical and mechanical resistance and enhances adhesion to the substrate.



Recommendations for application:

Add to the base product in ratio 10:1. After the catalysis, dilute with water if necessary. For professional use.

CATALYST NAT4100-2K		
Code	Desc.	Pack.
NAT4099-2K	100 ml	12 pcs.
NAT4100-2K	250 ml	12 pcs.
NAT4101-2K	500 ml	12 pcs.
NAT4105-2K	1 Lt	06 pcs.
NAT4103-2K	2,5 Lt	02 pcs.
NAT4104-2K	5 Lt	02 pcs.



Waterbased Zero Gloss Natural Effect 1-2K INVISIBLE TOUCH

A waterbased lacquer with an "invisible" effect. It gives a very modern ultra-matt appearance and does not alter the natural look of the raw wood whilst still giving a high level of surface protection. Invisible Touch is the perfect choice where the unique, natural appearance of the wood needs to remain unaltered but still have a high level of protection.



Recommendations for application:

Add NAT4100-2K hardener for waterbased lacquers, dilute with 10% of water, apply preferably by spray. Approx yield: 10-12m²/Lt.

Code	Desc.	Pack.
NAT4130	1 Lt	06 pcs.
NAT4131	5 Lt	02 pcs.
NAT4132	10 Lt	
NAT4133	20 Lt	



Single Component Lacquer for Parquet – Easy 1K-PU EASY PARKETTLACK

A single-component PU-based lacquer supplied ready for use specifically developed as a self-sealing treatment for any wooden floor. Quick and easy to use, fast drying, it is also suitable for industrial lines. Available in 5, 10, 30, 60 and 90 gloss.



Recommendations for application:

To increase the coverage of the coating application over the 2K PU Parkettlack Basecoat is recommended.

Code	Desc.	Pack.
4160-XX.PU	1 Lt	06 pcs.
4161-XX.PU	5 Lt	02 pcs.
4164-XX.PU	10 Lt	



High Performance

CATALYST FOR WATERBASED LACQUERS VOC FREE

High performance VOC-free hardener for waterbased lacquers (ex. Naturaqua Parkettlack 1-2k, Naturaqua Mobilack). It imparts high surface hardness. Recommended for matt and glossy lacquers.



Recommendations for application:

To be used in 10:1 ratio with lacquer, according to dilution instructions.

Code	Desc.	Pack.
NAT4177-2K	100 ml	12 pcs.
NAT4178-2K	500 ml	12 pcs.

Two Component High Performance

2K-PU PARKETTLACK BASECOAT

PU-based two component, high solid basecoat for wooden flooring. Easy to apply, it is specifically formulated as the preliminary coating for 2K-PU Parkettlack finishes. Fast drying, it is easy to sand and ensures excellent coverage of the surface.



Recommendations for application:

Hardener ratio 1:1. The product has to be diluted with DPU011 at 10-20%.
Approx yield: 10-14m²/Lt



2K-PU Parkettlack Basecoat Kit

Code	Desc.	Desc.	Pack.
4145-2K	2K-PU Parkettlack Basecoat Kit Kit 0,5 Lt. + 0,5 Lt A+B	1 Lt	06 pcs.
4146-2K	2K-PU Parkettlack Basecoat Kit 1 Lt. + 1 Lt A+B	2 Lt.	06 pcs.
4147-2K	2K-PU Parkettlack Basecoat Kit 2,5 Lt. + 2,5 Lt A+B	5 Lt.	

Catalyst Basecoat Parkettlack 2k-PU

Code	Desc.	Pack.
4135K	500 ml	06 pcs.
4136K	1 Lt.	06 pcs.
4137K	2,5 Lt.	02 pcs.
4138K	5 Lt.	02 pcs.
4139K	20 Lt.	

Basecoat Parkettlack 2K-PU

Code	Desc.	Pack.
4135-2K	500 ml	06 pcs.
4136-2K	1 Lt.	06 pcs.
4137-2K	2,5 Lt.	02 pcs.
4138-2K	5 Lt.	02 pcs.
4139-2K	20 Lt.	

Two Component High Performance Lacquer

2K-PU PARKETTLACK

High-solid two component PU finish for wooden flooring. Easy to apply and with long open time it is formulated to allow workability and spreadability even with high temperatures, and offers the highest protection level. Available in 5, 10, 30, 60 and 90 gloss.



Recommendations for application:

Hardener ratio 1:1. The product has to be diluted with DPU011 at 10-20%. To be used with 2k PU Parkettlack Basecoat, even in one single coat. Approx yield: 10-14m²/Lt.



KIT Parkettlack 2k-PU

Code	Desc.	Desc.	Pack.
4140-2K-XX	2K Parkettlack Pu Kit 0,5 Lt. + 0,5 Lt A+B	1 Lt	06 pcs.
4141-2K-XX	2K Parkettlack Pu Kit 1 Lt. + 1 Lt A+B	2 Lt.	06 pcs.
4142-2K-XX	2K Parkettlack Pu Kit 2,5 Lt. + 2,5 Lt A+B	5 Lt.	

Catalyst Parkettlack 2k-PU

Code	Desc.	Pack.
4115-K	500 ml	06 pcs.
4107-K	1 Lt.	06 pcs.
4107.2,5-K	2,5 Lt.	02 pcs.
4108-K	5 Lt.	02 pcs.
4110-K	20 Lt.	

Parkettlack 2K-PU

Code	Desc.	Pack.
4115-2K-XX	500 ml	06 pcs.
4100-2K-XX	1 Lt.	06 pcs.
4101-2K-XX	2,5 Lt.	02 pcs.
4102-2K-XX	5 Lt.	02 pcs.
4104-2K-XX	20 Lt.	

Two Components High Performance Lacquer – Anti-scratch, Natural Matt Effect

2K ULTRAMAX MATT

Two component lacquer for parquet which provides maximum coverage and high scratch and marr-resistance, free of unwanted polishing effects typical for matt finishes. Ideal for any surface that is exposed to wear. Hardener ratio: 100:20.



Recommendations for application:

Apply by spray or roller after proper dilution. Approx yield: 10-14m²/Lt.



Code	Desc.	Pack.
41002K + 4100K	1 Lt+ 200 ml	06 pcs.
41022K + 4102K	5 Lt + 1 Lt	02 pcs.

Comparison charts:

CHARACTERISTICS	OILS					
	CLASSIC			ECO PREMIUM		
	Parquet oil Quick	Parquet oil PLUS	Parquet oil PRO	Eco premium Parquet Oil	Eco premium Parquet oil HS	Parquet Oil 2k
Formulation	Based on natural oils and waxes, reinforced with resins	Based on natural oils and waxes, reinforced with resins	Based on natural oils and waxes, reinforced with resins	Based on natural oil, waxes and resins	Based on natural oil, waxes and resins	Based on natural oil, waxes and resins
Essiccazione	6-8 h	9-12 h	12-16 h	24-48h	24-48h	24-48h
Available gloss levels	10, 30, 60, 90	10, 30, 60, 90	10, 30, 60, 90	Natural effect	Natural effect	Natural effect
Hardwax version availability	Yes	Yes	No	No	No	Yes
Manual application (brush, rag roller)	Possible	Possible	Possible	Not recommended	Not recommended	Not recommended
Buffing machine application	Not recommended	Not recommended	Possible	Necessary	Necessary	Necessary
Industrial application (oil coating machine)	Possible	Possible	Possible	Possible	Possible	Possible
Hardness and resistance	**	**	**	*	*	***
Solid content	43% 48% for HW harwax version	43% 48% for HW harwax version	60% 64% for HW harwax version	55%	70%	100%
Aromatics content	<2%	Aromatic Free	Aromatic Free	Aromatic Free	Aromatic Free	Aromatic Free
Flammability - ADR	Flammable for ADR	Not flammable for ADR	Not flammable for ADR	Not flammable for ADR	Not flammable for ADR	Not flammable for ADR
VOC content	463 g/l 427 g/l in HW hardwax version	463 g/l 427 g/l in HW hardwax version	392 g/l 357 g/l in HW hardwax version	VOC Free	VOC Free	VOC Free
VOC category	A/f = 700 g/l	A/f = 700 g/l	A/f = 700 g/l	A/f = 700 g/l	A/f = 700 g/l	A/f = 700 g/l

CHARACTERISTICS	LACQUERS					
	CLASSIC			Naturaqua		
	1K-PU Easy Parkettlack	2K Parkettlack	2K Ultramax matt anti-scratch	1-2K Naturaqua Parkettlack	1-2K Naturaqua Parkettlack + Hardener	2K Naturaqua Parkettlack
Formulation	Polyurethane	Two components polyurethane	Two components acrylic - polyurethane	Acrylic polyurethane dispersion	Acrylic polyurethane dispersion + crosslinker	Polyurethane dispersion
Drying time	4-6 hours	24-36 hours	1-2 hours	4-6 hours	4-6 hours	2-4 hours
Available gloss levels	10-30-60-90	30, 60, 90	Matt 0-5 gloss	0-5, 10-20, 30-40, 50-60, 80-90	0-5, 10-20, 30-40, 50-60, 80-90	10-20, 30-40, 50-60,
Manual application (brush, roller)	Yes	Yes	Yes	Yes	Yes	Yes
Spray application	Yes	Yes	Yes	Yes	Yes	Yes
Hardness and resistance	x	xx	xxx	x	xx	xxx
Solid content	45%	45%	25%	32%	36%	40%
Catalysis ratio	/	1:1	10:2	/	10:1	10:1
Flammability - ADR	Yes	Yes	Yes	no	no	no
VOC content	479 g/l	479 g/l	726 g/l	64 g/l	64 g/l	48 g/l
VOC category	A/i=500g/l	A/j=500g/l	B/e=840 g/l	A/i= 140	A/j=140	A/j=140

CLEANING AND MAINTENANCE FOR PARQUET

Parquet care means cleaning with suitable, effective, but non-aggressive products that cleanse without compromising the original finish hence the pH-neutral soaps, also suitable for oiled flooring. The waxes add further protection, preserve the surfaces from wear and enhance their beauty. Natural or self-polishing, they are aimed at both the private user and the professional.



CLEANING AND MAINTENANCE FOR PARQUET



Traditional Wax Polish

REBUFFABLE BEESWAX FOR PARQUET (Solid/Liquid)

Special polishing wax for parquet, based on a blend of pure beeswax and carnauba wax. Ideal for the natural finishing of surfaces treated with oil. Silicon-free, it is simple to use, nourishes and protects all wooden surfaces and gives a pleasant and soft protective 'veil' with anti-static properties.



Recommendations for application:

The rebuffable beeswax for parquet, pigmented with stable colours and resistant to light, is ideal for the restoration of antique parquet and creating special effects. Approx. yield: 30-40m²/Lt.



Code	Desc.	Pack.
4960	5L solid	02 pcs.
0690	1L liquid	12 pcs.
0692	5L liquid	02 pcs.

Daily Detergent PARQUET CLEANER

Waterbased detergent made with natural soap, with neutral pH, for the cleaning of varnished or oil treated wooden floors. Pleasantly perfumed, it removes dirt and grease effectively without damaging the coating, cleaning efficiently but gently at the same time. Suitable also for terracotta surfaces.



Recommendations for application:

Dilute in water for the daily cleaning or use as it is for local intervention on small areas. Available also in a white version for light-coloured pastel or white floors. Approx. yield: 60-70m²/Lt.



Code	Desc.	Pack.
NAT0048	1 Lt	12 pcs.
NAT0049	5 Lt	02 pcs.
NAT0050	25 Lt	

Waterbased Liquid Wax Polish PARQUET WAX

A solvent-free wax emulsion designed for the protection and renewal of parquet damaged by constant wear. Its composition of natural waxes with mild surfactants provides a pleasant shine and resistance to frequent traffic areas. Ideal for protecting oil-treated and lacquered parquet floors. According to the type of finishing that needs to be revitalized, there is a matt (for 20-40 gloss matt oil/lacquer finishings) and deep matt (for zero gloss, natural effect finishings) versions of the product.



Recommendations for application:

Apply evenly and avoid overlapping. Wait for complete drying. Approx. yield: 60-70m²/Lt

Code	Desc.	Pack.
0490	1 Lt	12 pcs.
0491	5 Lt	02 pcs.
0490-30	1 Lt matt	12 pcs.
0491-30	5 Lt mat	02 pcs.
0490-10	1 Lt deep matt	12 pcs.
0491-10	5 Lt deep matt	02 pcs.



Waterbased Regenerative Treatment for Flooring NATURAQUA REVIVER FOR PARQUET

Ecological and hypoallergenic formula based on precious waxes and polymers dispersed in water. It is VOC-free, easy-to-use, evenly sets, rapidly dries and restores the tone and flexibility to a varnished wood flooring. Renews treated surfaces that will retain clarity, resistance and the ease of cleaning for a longer period of time.



Recommendations for application:

Odorless and colorless. To be used undiluted on deteriorating surfaces; for normal, daily maintenance it should be diluted with water or added in small amounts (1%) to cleaning water. Available in glossy, satin or matt sheen levels.



Code	Desc.	Pack.
NAT0500-XX	1 Lt	12 pcs.



CLEANING AND MAINTENANCE FOR PARQUET



Water-based Intensive Wax remover UNIVERSAL ABWACHSER

Intensive Deep Cleaner. Highly concentrated, dilutable 1:6. Easily removes old layers of wax on all types of flooring. Temperature: +5°C / +30°C



Recommendations for application:

Dilute the wax-remover in water, 1 to max 6 parts of water. Apply it evenly, leave it a short while to act, for efficiency improvement rub hard and rinse with water.

Code	Desc.	Pack.
0040	1 Lt	12 pcs.
0041	5 Lt	02 pcs.



Cleaning and Maintenance KIT PARQUET 1

Ideal for oiled and lacquered parquet floors. It consists of:

1. Parquet Cleaner - PH-neutral soap for intensive cleaning of all types of wooden floors.
2. Parquet Wax - Self-polishing odorless water-based wax for parquet.



Code	Desc.
4885	1 Lt + 1 Lt

Cleaning and Maintenance KIT PARQUET 2

Ideal for oiled and lacquered parquet floors. It consists of:

1. Parquet Cleaner - PH-neutral soap for intensive cleaning of all types of wooden floors.
2. Rebuffable Beeswax for Parquet (liquid) - for extraordinary maintenance of wooden floors.



Code	Desc.
4886	1 Lt + 1 Lt

Daily Detergent LAMINATE CLEANER

Pleasantly perfumed, it removes dirt and grease without damaging the surface.



Recommendations for application:

Dilute in water for daily cleaning or use neat for local intervention on small areas. Approx yield: 60-70m²/Lt.

Code	Desc.	Pack.
NAT0057	1 Lt	12 pcs.
NAT0058	5 Lt	02 pcs.



Waterbased Liquid Wax Polish LAMINATE REVIVER

Special self-polishing waxy reviving agent to revitalize laminate floors damaged by wear and frequent foot traffic. Water soluble, formaldehyde-free and virtually odourless.



Recommendations for application:

Apply evenly and avoid overlapping. Wait until completely dry before using the area. Approx. yield: 60-70m²/Lt.

Code	Desc.	Pack.
3366	1 Lt	12 pcs.
3367	5 Lt	02 pcs.



easy
to clean



BASECOATS AND TOPCOATS FOR FURNITURE

In the furniture sector our portfolio is split into oil-based products, water based or traditional, to meet every aesthetic and application needs. Different gloss versions and the variety of available technologies make up an ideal range, so that the professional user has a full selection to choose from. Special attention should be paid to surfaces intended for contact with food; specific certified oils are presented for this type of use. Even more niche, specialist areas like sauna treatment and kitchenware finishes are catered for with dedicated products for finishing and maintenance.



BASECOATS AND TOPCOATS FOR FURNITURE



Oil for Furniture

HARD FURNITURE OIL – HARDWAX FURNITURE OIL

Based on natural oils and enriched with high quality resins and waxes, Hard Furniture Oil gives outstanding resistance to staining and scratches. It has a pleasant natural satin effect and is suitable for the protection of virgin or dyed wood with a delicate amber toning. Available in 10%-30%-60%-90% gloss and also in the natural opaque waxy version.



Recommendations for application:

Applicable by brush, rag, roller or spray. For a particularly exquisite and natural effect it is advisable to remove excess with a soft cloth. Allow to dry completely before using the treated object. Approx yield: 12-24m²/Lt.

Hard Furniture Oil		
Code	Desc.	Pack.
4902-XX	1 Lt	06 pcs.
4903-XX	5 Lt	02 pcs.
4902.10-XX	10 Lt	
4904-XX	20 Lt	

Hardwax Furniture Oil		
Code	Desc.	Pack.
4907	1 Lt	06 pcs.
4908	5 Lt	02 pcs.
4914	10 Lt	
4909	20 Lt	

Oil for Kitchen Tops

HARD TOP OIL AND HARD TOP OIL NATURAL 6020

Based on natural oils and enriched with high quality resins and waxes, Hard Top Oil provides excellent protection with a pleasant natural effect. Suitable for tables and kitchen tops in general, as well as chopping boards and wooden kitchen tools, it is certified for food contact according to EN71.3, DIN 53160 and DIN68861 standards. Also available in waxy version with natural opaque effect (Natural 6020).



Recommendations for application:

Applicable by brush, rag, roller or spray. For a very accurate effect it is advisable to remove the excess with a soft cloth. Allow to dry completely before using the treated object. The chopping boards and other frequent-use items can be washed with water and Borma Neutral Soap; they will be subject to maintenance proportional to the frequency of use.

Approx yield: 14-26m²/Lt.

Hard Top Oil		
Code	Desc.	Pack.
4916	750 ml.	06 pcs.
4917	5 Lt.	02 pcs.
4916.10	10 Lt.	
4916.20	20 Lt.	

Hard Top Oil Natural 6020		
Code	Desc.	Pack.
4916N	750 ml.	06 pcs.
4917N	5 Lt.	02 pcs.
4916.10N	10 Lt.	
4916.20N	20 Lt.	

Oil for Kitchen Utensils

KITCHENWARE OIL

VOC-free oil, made with substances of natural origin, ideal for the treatment of objects in raw wood or those previously treated with oil, which come into constant contact with food such as wooden chopping boards, butchers blocks, plates, salad bowls, spoons, etc. Kitchenware Oil makes the surface highly water and dirt repellent. Certified in accordance with EN71-III, and wholly void of harmful substances.



Recommendations for application:

Apply one or two coats with a brush or rag, or even by dipping, and remove the excess product with a soft cloth. Reapply if necessary, as frequently as requested by the type of use and washing. Approx yield: 8-12m²/Lt.

Code	Desc.	Pack.
4989.025	250 ml	12 pcs.
4989.05	500 ml	12 pcs.
4989.1	1 Lt.	06 pcs.
4989.5	5 Lt.	02 pcs.
4989.20	20 Lt	

BASECOATS AND TOPCOATS FOR FURNITURE

Protective Treatment for Saunas

SAUNA OIL

A blend of oils for the treatment and maintenance of the internal surfaces of saunas (benches, claddings and floors in raw wood). Imparts excellent water repellency and protects the wood from dehydration, naturally revitalising the colour and the grain.



Recommendations for application:

Sauna Oil is applied to dry, clean, untreated wood with a rag and without excess, repeated periodically as necessary. Approx yield: 8-16m²/Lt.

Code	Desc.	Pack.
3940	500 ml	12 pcs.
3941	1 Lt	12 pcs.
3942	5 Lt	02 pcs.



Waxy Protective Finish for Saunas

NATURAQUA BORMA SAUNA WACHS

A waterbased treatment formulated with high quality waxes and resins specifically for the protection of all the internal surfaces of saunas (benches, panels, floors, ceilings). Transparent, it does not alter the wood tone and gives a pleasant natural effect and protection from dirt and water. It is available in 'on-trend' white, grey and black shades. Thanks to its low viscosity and vapor permeability the product is absorbed deeply into the wood and maintains a natural and silky feel on the surface.



Recommendations for application:

The product is also suitable for use on the exterior coating. In this case, overcoating with Naturaqua Top Gel is recommended to increase the durability of the finish. Approx yield: 10-12m²/Lt.



08 Transparent



50 White



9002 Grey



60 Black



Code	Desc.	Pack.
NAT3361XX	750 ml	06 pcs.
NAT3362XX	2,5 Lt.	02 pcs.
NAT3363XX	5 Lt.	02 pcs.
NAT3365XX	20 Lt.	

Waterbased Basecoat

1-2K WATERBASED BASECOAT FOR FURNITURE

Transparent waterbased basecoat for lacquering all types of interior wood. Perfect as the first coat when using Naturaqua Mobilack. It has excellent transparency and elasticity and is easy to apply by brush even on vertical surfaces due to its special rheology. Ideal for furniture, doors, skirting boards and claddings etc.



Recommendations for application:

Ready for use as a single-component product, it can also be catalysed with Borma NAT410X-2K catalyst for waterbased paints, in a 10: 1 ratio. Approx yield: 10-12m²/Lt.

CATALYST NAT4100-2K		
Code	Desc.	Pack.
NAT4099-2K	100 ml	12 pcs.
NAT4100-2K	250 ml	12 pcs.
NAT4101-2K	500 ml	12 pcs.
NAT4105-2K	1 Lt	06 pcs.
NAT4103-2K	2,5 Lt	02 pcs.
NAT4104-2K	5 Lt	02 pcs.

Code	Desc.	Pack.
NAT4126	1 Lt	06 pcs.
NAT4127	5 Lt	02 pcs.
NAT4128	10 Lt	
NAT4129	20 Lt	



Waterbased Lacquer for Furniture

NATURAQUA MOBILACK 1-2K

Eco-compatible finish for the treatment of furniture. It respects the environment and workers' health, thanks to its water base is almost VOC free. Mobilack develops very high levels of protection against wear and abrasion of traditional wooden surfaces, already sanded or restored. High performance with the ease of use of a single-component/ catalyzed technology. Available in deep matt, matt, semi-gloss and glossy sheen levels.



Recommendations for application:

Can be used as a single-component product or can be catalysed with Borma Catalyst NAT410X-2K in a ratio: 10: 1. Approx yield: 10-12m²/Lt.

CATALYST NAT4100-2K		
Code	Desc.	Pack.
NAT4099-2K	100 ml	12 pcs.
NAT4100-2K	250 ml	12 pcs.
NAT4101-2K	500 ml	12 pcs.
NAT4105-2K	1 Lt	06 pcs.
NAT4103-2K	2,5 Lt	02 pcs.
NAT4104-2K	5 Lt	02 pcs.

Code	Desc.	Pack.
NAT4122-XX	1 Lt	06 pcs.
NAT4123-XX	5 Lt	02 pcs.
NAT4124-XX	10 Lt	
NAT4125-XX	20 Lt	



Special Waterbased Protection

NATURAQUA WOOD AND CORK

Special waterbased self-priming single-component lacquer for the treatment of highly porous wooden surfaces and cork in particular. The product is ideal for creating a protective transparent and deeply penetrating finish. Excellent resistance to temperature changes.



Recommendations for application:

Easy to apply by brush, rapidly drying.

Code	Desc.	Pack.
NAT4170.250-XX	250 ml	12 pcs.
NAT4170-XX	1 Lt	06 pcs.
NAT4170.5-XX	5 Lt	02 pcs.
NAT4170.10-XX	10 Lt	
NAT4170.20-XX	20 Lt	



Two Component Oil ONE COAT 2K WOOD OIL

A finely tuned blend of zero-emission oils with extraordinary performance. Its special formula makes it suitable for catalysis which significantly increases the surface resistance and reduces the drying time as well as the frequency of maintenance required. Due to 100% solid content only one layer of 20-30g /m² is required to obtain a top-quality finish with high surface resistance.



Recommendations for application:

For Professional Use. Suitable for Exteriors as well as Interiors.

Code	Desc.	Pack.
4996 + 4996K	1 Lt	06 pcs.
4997 + 4997K	2,5 Lt	02 pcs.
4998 + 4998K	5 Lt	02 pcs.
4999 + 4999K	20 Lt	



Waterbased Lacquer for Furniture 1-2K INVISIBLE TOUCH

A waterbased lacquer with an “invisible” effect. It gives a very modern ultra-matt appearance and does not alter the natural look of the raw wood whilst still giving a high level of surface protection. Invisible Touch is the perfect choice where the unique, natural appearance of the wood needs to remain unaltered but still have a high level of protection.



Recommendations for application:

Apply preferably by spraying after catalysis with NAT4100-2K, catalyst for water-based paints and 10% dilution in water. Approx yield: 10-12m²/Lt.

CATALYST NAT4100-2K		
Code	Desc.	Pack.
NAT4099-2K	100 ml	12 pcs.
NAT4100-2K	250 ml	12 pcs.
NAT4101-2K	500 ml	12 pcs.
NAT4105-2K	1 Lt	06 pcs.
NAT4103-2K	2,5 Lt	02 pcs.
NAT4104-2K	5 Lt	02 pcs.

Code	Desc.	Pack.
NAT4130	1 Lt	06 pcs.
NAT4131.5	5 Lt	02 pcs.
NAT4132	10 Lt	
NAT4133	20 Lt	



Traditional Lacquer for Furniture MOBILACK

A fast-drying PU Lacquer for furniture, easy to use, and suitable as a self-sealer also for doors, skirting boards and other interior surfaces. Available in 5, 10, 30, 60 and 90 gloss.



Recommendations for application:

Ready for use, however, to get greater impregnation the product can be diluted up to 30% with Solvoil 03, 04 or 06 dependent on the finish required. Approx yield: 12-24m²/Lt.

Code	Desc.	Pack.
4122-XX	750 ml	06 pcs.
4122.2.5-XX	2,5 Lt	02 pcs.
4122.5-XX	5 Lt	02 pcs.
4122.20-XX	20 Lt	



Traditional Basecoat BASECOAT GEL

Basecoat Gel is a fast drying, single-component, transparent product with excellent adhesion power. It is ideal as a first coat before painting or wax finishes.



Recommendations for application:

The product is a ready-for-use easy to apply gel ideal for use on vertical surfaces to avoiding drips, runs or sags. It's fast-drying formulation ensures excellent results even if diluted. Approx yield: 12-14m²/Lt.

Code	Desc.	Pack.
0650	250 ml	12 pcs.
0652	750 ml	06 pcs.
0655	5 Lt	02 pcs.



Traditional Lacquer NC LACK

A traditional Nitro-cellulose, low-yellowing and easy to sand gel lacquer with a consistency that prevents dripping and makes it ideal for vertical surfaces. Available in 20-40-60 gloss levels.



Recommendations for application:

Used in furniture restoration, it is also an excellent fixative for stains. Approx yield: 10-12m²/Lt.

Code	Desc.	Pack.
0620	250 ml	12 pcs.
0621	750 ml	06 pcs.
0622	5 Lt	02 pcs.



Waterbased Paint for Furniture WHITE INTERIOR PAINT – BLACK INTERIOR PAINT

White or black covering varnish for furniture and indoor surfaces, odourless and easy to apply even vertically. With a pleasant opaque effect, it is dense and filling. It allows you to effortlessly renovate furnishings, doors, windows, directly in the home environment.



Recommendations for application:

Ideal both by brush and spray

Code	Desc.	Pack.
TRN69029005-30 BLACK RAL 9005 30 GLOSS	750 ml	6 pcs.
TRNAT690250-30 WHITE 50 30 GLOSS	750 ml	6 pcs.
TRN69039005-30 RAL 9005 30 GLOSS	2,5 lt	2 pcs.
TRNAT690350-30 WHITE 50 30 GLOSS	2,5 lt	2 pcs.



CLEANING AND MAINTENANCE FOR FURNITURE

The products for daily or periodic cleaning and protection are much more than a complement and can become a functional 'finishing touch' to the coating system, extending its life and enhancing its value. The intensive detergents, suitable for any type of finish, help in the more focused cleaning operations, whilst the water-based soap is dedicated to regular use even on delicate surfaces. Our finely-formulated range also offers specific wax and oil options depending on the type of original finish and the general conditions of application.



CLEANING AND MAINTENANCE FOR FURNITURE



Intensive Wax Remover for Wood RADIKAL ABWACHSER

The ideal product for the total cleaning of all wooden surfaces. With speed and absolute effectiveness it attacks the old layers of wax removing any dirt, dust and ingrained debris without the potential of damage to the underlying lacquers.



Recommendations for application:

Apply with a cloth and if necessary, rub with Steel Wool 000 or 0000. Wipe with a clean cloth to remove any residue.



Code	Desc.	Pack.
0042	250 ml	12 pcs.
0043	500 ml	12 pcs.
0044	1L	12 pcs.
0045	5L	02 pcs.
0046	Spray 400 ml	12 pcs.

Intensive Polishing Cleaner for Wood FURNITURE CLEANER (Möbelreiniger)

Polishing cleaner for any lacquered surface. Möbelreiniger is a mixture of precious mineral oils. Designed for removing streaks and greying due to the wear of surfaces and humidity. Thoroughly sanitizes and restores brightness.



Recommendations for application:

Apply with a soft cloth, rub with circular movements and allow to dry. The product leaves no residue.



Code	Desc.	Pack.
0015	250 ml	12 pcs.
0016	500 ml	12 pcs.
0017	1L	12 pcs.
0018	Spray 400 ml	12 pcs.

Daily Waterbased Detergent FURNITURE NEUTRAL DETERGENT

Waterbased, with a neutral soap and Orange Essential Oil, it is ideal for the daily care of furniture. Suitable for all indoor surfaces, lacquered, painted or treated with oil. This bespoke cleaner gently cleanses and respects the original finishes, leaving a lasting, fresh Orange Citrus scent.



Recommendations for application:

Apply with a soft cloth and wipe with circular movements. Wipe again with a dry cloth to polish the surface.



Code	Desc.	Pack.
NAT0060	500 ml	12 pcs.
NAT0061	1 Lt	12 pcs.
NAT0061.5	5 Lt	02 pcs.
NAT0061.25	25 Lt	

CLEANING AND MAINTENANCE FOR FURNITURE

Daily Care

FURNITURE CREAMY WAX POLISH - MOBILCERA

A waxy cream polish for furniture that transforms and renews the lustre of dull and jaded surfaces. It sanitises and polishes, protecting the surface from dust and moisture.



Recommendations for application:

Apply small quantities with a soft cloth and massage until completely absorbed. Approx. yield: 30-40m²/Lt.

+5°C
+30°C



Code	Desc.	Pack.
0400	250 ml	12 pcs.
0401	500 ml	12 pcs.
0402	1 Lt	12 pcs.

Periodic Care

WACHS&OELPFLEGE

An ideal detergent for the cleaning and maintenance of surfaces treated with oil or wax. Ecological and waterbased, it combines natural waxes and precious oils that cleanse and revitalise the treated surface in a single application.



Recommendations for application:

Apply with a soft cloth and wipe again after a few seconds with a clean and dry cloth to remove dust and excess product whilst polishing the surface. Approx. yield: 30-40m²/Lt.

+5°C
+30°C



Code	Desc.	Pack.
4061	250 ml	12 pcs.
4062	500 ml	12 pcs.
4063	1 Lt.	12 pcs.
4064	5 Lt.	02 pcs.

Special for Oil finishes

INTERIOR OIL REFRESHER

For the more intense maintenance of indoor wood, the Interior Oil Refresher is perfect for the care and restoration of any surface previously treated with Borma oils. Easy to apply, it nourishes the wood and renews the existing protective layer. It gives a pleasantly satin appearance and enhances the natural beauty of grain.



Recommendations for application:

Apply sparingly with a brush or rag. For normal maintenance, just one coat is sufficient. Allow to dry completely before re-using the surface.



Code	Desc.	Pack.
3976	250 ml	12 pcs.
3977	500 ml	12 pcs.
3978	1 Lt	12 pcs.
3978.05	5 Lt	02 pcs.



Customizable with Borma Colour System

Natural Reviver

RESTORING OIL

A natural product for furniture maintenance and restoration. This traditional formulation of precious oils and extenders ensures high reviving and protective power for wood and lacquers. Penetrating deeply, it dyes and polishes, hiding scratches and abrasions.

Available Colours: Light Wood, Medium Wood, Dark Wood and Mahogany.



Recommendations for application:

Apply with a cloth and remove any excess with a dry and clean cloth. Not ideal for floors. Approx. yield: 30-40m²/Lt.



08 Light Wood



59 Medium Wood



63 Dark Wood



62 Mahogany

Code	Desc.	Pack.
0410XX	150 ml	12 pcs.
0420XX	500 ml	12 pcs.
0450XX	1 Lt	12 pcs.
0470XX	5 Lt	02 pcs.

Bees and Carnauba wax – in Paste and Liquid Form HOLZWACHS

Based on beeswax and carnauba, it nourishes, regenerates, protects and polishes all types of wood, reviving its natural colour and tone. Recommended for interiors and fine furnishings.



Recommendations for application:

It can be applied on any wooden surface: raw, stained, varnished or with oil finishes. Rebuffable. Approx. yield: 30-40m²/Lt.

Holzwachs paste		
Code	Desc.	Pack.
0120XX	500 ml	06 pcs.
0150XX	1 Lt	06 pcs.
0170XX	5 Lt	02 pcs.
0190XX	20 Lt	

Holzwachs liquid Code Desc.		
Code	Desc.	Pack.
0210XX	250 ml	12 pcs.
0220XX	500 ml	12 pcs.
0250XX	1L	06 pcs.
0270XX	5L	02 pcs.
0290XX	20L	
0215XX	Spray 400 ml	12 pcs.

Colour chart



Waxy Blend for Furniture HARD WAX OIL 7030

Based on natural waxes and oils, the product combines the ease of application of wax paste with the resistance of oil. Colourless, it is used to soften the effects obtained with coloured waxes and to give the surfaces higher protection, water repellency and hardness.



Recommendations for application:

Spread or brush in thin, uniform layers. Polish with a soft cloth. Approx. yield: 20-30m²/Lt.



Customizable with Borma Colour System

Code	Desc.	Pack.
2960XX	750 ml.	06 pcs.
2965XX	2,5 Lt.	02 pcs.
2965.5XX	5 Lt.	02 pcs.
2970XX	10 Lt.	





Borma IG Pure

Hygiene: Dual Functionality



Borma IG PURE is a cutting-edge, dual-function wooden finishing. Building on the innovations of R&D project results, Borma IG PURE is designed to provide long-lasting protection and self-regenerating cleaning action.

A high-tech polymer structure protects the wooden support and inorganic silver technology on surface relay active ions providing optimal performance during water cleaning.

Wooden surfaces treated with Borma IG PURE offer greater hygiene between cleaning procedure.

Self Sealing Sanitizing Oil

IG PURE HARD WOOD OIL

Natural oil based treatment, reinforced with high quality resins, for the finishing and active cleaning of wooden floors. It provides an excellent resistance to stains and wear and is enhanced with iG PURE technology of controlled Silver ions release. It does not need specific basecoats and is ready-to-use. Available in the following gloss levels: natural effect 5% - deep matt 10% - matt 30% - semiglossy 60% - glossy 90%. Latest generation solution, self-regenerating protection, high viscosity. Not flammable, free from any transport limitation.



Recommendations for application:

The product can be applied by brush, roller, rag or spray. Always provide proper ventilation to the treated areas to allow the correct drying process of the oil.

Code	Desc.	Pack.
IG4951.1-XX	1 Lt.	06 pcs.
IG4951.5-XX	5 Lt.	02 pcs.
IG4951.10-XX	10 Lt.	
IG4951.20-XX	20 Lt.	



Sanitizing Waterbased Parquet Lacquer

IG PURE NATURAQUA 1-2K PARQUET LACK

Water-based self-sealing high resistance eco-friendly lacquer ideal for the treatment and active cleaning of wooden floors. It develops high levels of performance against wear and abrasion, as the innovative iG PURE technology grants additional sanitary protection. Suitable for all types of wood, being self-sealer it does not necessarily require a specific primer. Latest generation solution, self-regenerating protection with controlled Silver ions release. Ready for use, (one component), can be easily spread on any treated surface. On demand it can be further improved in performance by adding its specific hardener, (two component). Hardener addition ratio is 10%. Available in gloss levels: natural effect 0-5% - deep matt 10-20% - matt 30-40% - semiglossy 50-60% - glossy 80-90%.



Recommendations for application:

The product can be applied by brush or roller directly on sanded raw wood or on water-based, oil-based basecoats or oil-based finishes from Borma range. Approx. yield: 10-14 m²/Lt

Code	Desc.	Pack.
IGNAT4100.1-XX	1 Lt.	06 pcs.
IGNAT4100.5-XX	5 Lt.	02 pcs.
IGNAT4100.10-XX	10 Lt.	
IGNAT4100.20-XX	20 Lt.	



Sanitizing Waterbased Lacquer for Furniture

IG PURE NATURAQUA 1-2K MOBILACK

Eco-compatible Self Sealing finish for the treatment and active cleaning of furniture. It respects the environment, workers health and protects user's health thanks to its water base, almost non-existent VOC content and iG PURE innovative technology. Mobilack develops very high levels of protection against wear, abrasion and bacteria thanks to the controlled release of Silver ions. High performance with the ease of use of a single component and self-regenerating protection. By need or aim, Mobilack can be further improved in performances by adding its specific hardener, (two component). Hardener addition ratio is 10%. Available in gloss levels: natural effect 0-5% - deep matt 10-20% - matt 30-40% - semiglossy 50-60% - glossy 80-90%.



Recommendations for application:

The product can be applied by Brush, Spray or Roller directly on sanded raw wood or on water-based or oil-based basecoats. It can be applied on Borma Oil finishes as well, prior a proper sanding. Approx yield: 10-14 m²/Lt.

Code	Desc.	Pack.
IGNAT4122.1-XX	1 Lt.	06 pcs.
IGNAT4122.5-XX	5 Lt.	02 pcs.
IGNAT4122.10-XX	10 Lt.	
IGNAT4122.20-XX	20 Lt.	





IG Pure

IG PURE technology enhances performance of some of our traditional products as:

Waterbased Sanitizing and Regenerative Polish for Wood-floors

IG PURE PARWACHS - PARQUET REVIVER

An ecological, hypoallergenic and sanitizing double-action formula based on precious waxes and high-tech polymer dispersed in water. It is VOC-free, easy-to-use, evenly sets, rapidly dries and restores the tone, flexibility and resistance to wood flooring, thus protecting it. The sanitizing function is granted by controlled release of Silver ions encapsulated into inorganic nanostructured crystals. On demand available in white version for whitened oiled parquet. According to the type of finishing that needs to be revitalized, there is a matt (for 20-40 gloss matt oil/lacquer finishings) and deep matt (for zero gloss, natural effect finishings) versions of the product.

Code	Desc.	Pack.
IG0490.1-XX	1 Lt.	12 pcs.
IG0490.5-XX	5 Lt.	02 pcs.



Sanitize

IG PURE PARQUET CLEANER

Waterbased detergent with natural neutral pH, it is a double function soap for proper cleaning and sanitizing of any varnished or oil-treated wooden floors. Pleasantly perfumed, being Ph Neutral, it removes dirt and grease effectively without damaging the coating. Its sanitizing action is guaranteed by the controlled release of Silver ions encapsulated into inorganic nanostructured crystals.

Code	Desc.	Pack.
IGNAT0048.1	1 Lt.	12 pcs.
IGNAT0048.5	5 Lt.	02 pcs.
IGNAT0048.25	25 Lt.	



Waterbased Sanitizing and Regenerative Polish for Laminate

IG PURE LAMINATE REVIVER

An ecological, hypoallergenic, sanitizing double-action reviver based on precious waxes and high-tech polymers dispersed in water. Suitable also for linoleum, it is VOC-free, easy-to-use, evenly sets, rapidly dries and restores laminate floors damaged by traffic, thus protecting it. The sanitizing function is granted by the controlled release of Silver ions encapsulated into inorganic nanostructured crystals.

Code	Desc.	Pack.
IG3366.1	1 Lt.	12 pcs.
IG3366.5	5 Lt.	02 pcs.



Sanitize

IG PURE LAMINATE CLEANER

Waterbased detergent with natural neutral pH, it is a double function soap for proper cleaning and sanitizing of laminate floor. Pleasantly perfumed, being Ph Neutral, it removes dirt and grease effectively without damaging the coating. Its sanitizing action is guaranteed by the controlled release of Silver ions encapsulated into inorganic nanostructured crystals.

Code	Desc.	Pack.
IGNAT0057.1	1 Lt.	12 pcs.
IGNAT0057.5	5 Lt.	02 pcs.





Point

Authorised dealer







BORMA WACHS®
Wood Professional Cosmetics
& Eco-Finishes



Restauro - Restoration - Restaurierung
Материалы для реставрации



Ritocco e stucchi - Touch-Up and Fillers - Retusche und Kitte
Ремонт покрытий



Esterni - Exteriors - Aussenbereich - Экстерьеры



Interni - Interiors - Innenbereich - Интерьеры



Doratura - Gilding - Vergoldung - Золочение



Decorazione - Decoration - Dekoration - Декорирование



Borma Pro



Borma Colors



www.bormawachs.com

B.P.S. s.r.l.

Via Industria, 4 - 30029 San Stino di Livenza
Venezia Italy
Tel. +39 0421 951900 - Fax +39 0421 951902

Wood Professional Cosmetics & Eco-Finishes