



**BORMA WACHS**<sup>®</sup>  
Wood Professional Cosmetics  
& Eco-Finishes

DECORATION





# Company

We manufacture professional wood cosmetics for an eco-friendly way of life.

For decades BORMA WACHS has been working in the wood care and synthetic surface treatment sector with a sense of responsibility and constant commitment to pursuing three fundamental principles: quality, reliability and flexibility. The dynamism, production capacity, safety and marketability of our products characterise our company profile. As specialists in the professional cosmetics of wood and synthetic surfaces, we offer our customers only the best of the best.



# Certifications

Our products and manufacturing cycles are regularly tested and approved by international institutes.



## VOC FREE

All Borma Wachs branded products comply with the latest European legislation on emissions of potentially harmful substances into the atmosphere and have total regard for the environment and the health and wellbeing of our workers and our customers. With the new ECO PREMIUM - VOC FREE line we are able to offer an uncompromising range, with 100% natural and biodegradable products, with a VOC content reduced to zero.



## IBR CERTIFICATIONS

Borma Wachs products are tested and approved by the Rosenheim Institute for Green Building. The analyses carried out certify our products regarding the content of VOC's, biocides, heavy metals and radioactive material guaranteeing their eco-compatibility with the principles of Green Building. The Company always aims to understand the needs and sensitivity of customers, trying to better interpret the request for sustainable and environmentally friendly treatments coming from the use of renewable raw materials, in order to reduce as much as possible the impact on environment and on the health of users and all stakeholders in our communities.



## EN71.III CERTIFICATION

The Danish laboratories of Eurofins have recognised the compliance of Borma Wachs oils with the EN 71- III regulation on the migration of heavy metals harmful to health, ensuring the safety of the treatments to the point of allowing their use for finishing or maintenance of toys for children.

# Decoration

Actions Aimed at Creating a Unique and Emotional Ambience

Shabby settings are generally characterised by an informal, relaxed and frivolous environment. The technique of executing this type of finishing possesses the same qualities: comfort, freedom, simplicity. These products allow maximum liberty of expression – in colour, application, transparency, texture and special effects to accompany every style, from the most classical tastes to the most modern interpretations.





# INDEX

Page 6

**Shabby Provence**

Page 7

**Preliminary treatments**

Page 8/9

**Technical complements**

Page 10/12

**Patinas and aging products**

Page 13/15

**Finishes**

Page 16/17

**Borma Glass 2k**



**BORMA WACHS**<sup>®</sup>

Wood Professional Cosmetics  
& Eco-Finishes

# SHABBY PROVENCE

## Decorative Chalkpaint Shabby Provence

Shabby Provence water-based paint, thanks to the high solid content and the presence of natural gypsum, allows different applications while maintaining a dead matt and soft touch. Its pasty consistency is ideal for creating 3D effects with irregular brush strokes and overlapping colours.

Shabby Provence is characterised by an excellent adhesion capacity on each substrate, therefore it can be used to renovate furniture with old finishes without preliminary stripping, by applying high thicknesses in single coats.

Specific for interior decoration, in combination with other complementary products and thanks to the variety of colours in the colour chart, Shabby Provence allows you to create effects of great elegance and modernity, with maximum creative freedom and ease of use.



### Recommendations:

Dilution: the product is ready to use. It can be diluted with water (5-40%) depending on requirements. Drying time at 20°C, 50%RH: 30-60 min dust free, 3-12 hrs for complete drying, depending on the quantity applied.

+5°C  
+30°C



Code	Desc.	Pack.
6570XX.125	125 ml.	6 pcs.
6570XX	375 ml	6 pcs.
6571XX	750 ml.	6 pcs.
6572XX	2,5 Lt.	2 pcs.
6573XX	5 Lt.	2 pcs.

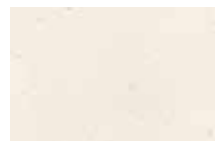
## Shabby Provence Colour Chart



SNOW WHITE 50



GREYISH WHITE 822



IVORY 08



CRETE WHITE 9001



AGATE LIGHT GREY 100



SILK GREY 7014



LIGHT BLUE GREY 2005



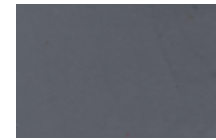
GREY 101



DARK GREY 107



AMBER GREY 109



SMOKE GREY 152



ANTHRACITE 145



BLACK 60



TURTLEDOVE 116



SAND YELLOW 129



PASTEL YELLOW 1034



OXIDE YELLOW 120



LEMON YELLOW 119



LIGHT OLIVE GREEN 81



OLIVE GREEN 31



SAGE GREEN 133



SPRING GREEN 132



MINT GREEN 130



FOREST GREEN 137



DEEP SKY BLUE 142



SKY BLUE 144



AQUAMARINE BLUE 150



DARK BLUE 148



VIOLET 127



BRICK RED 128



CORAL RED 125



ANTIQUÉ PINK 1515



PINK 126



ORANGE IBISCUS 122



PROVENCE BLUE 153

# PRELIMINARY TREATMENTS

## Natural Effect NATURAQUA WOOD SEALER

A waterborne acrylic insulator recommended also as natural-effect finish for raw wood or Shabby paint effects. It provides a matt and invisible finish and does not alter the colour of the background. It can be overcoated with Mobilack to increase the resistance properties of the surface.



### Recommendations for application:

Apply by brush or by spray. If used as a fixing lacquer for Shabby paint always ensure that it is completely dry before the application to avoid removal.



Customizable with Borma Colour System



Code	Desc.	Pack.
NAT4090	750 ml	06 pcs.
NAT4091	5 Lt	02 pcs.
NAT4090.10	10 Lt	
NAT4090.20	20 Lt	

## Anti-Tannin Basecoat NATURAQUA SUPER WOOD SEALER

Waterborne insulating basecoat with anti-tannin effect. It prevents brown-yellow stains caused by the application of waterborne products on wood with high content of tannins. Especially recommended for Shabby Provence and other waterbased white finishes. Available in white and transparent



### Recommendations for application:

Apply uniformly by brush or spray on raw wood. For very accurate finishes it is advisable to lightly sand and if necessary consider a second coat before the application of other products.



Customizable with Borma Colour System



WHITE		
Code	Desc.	Pack.
NAT4090B-S	750ml	06 pcs.
NAT4091B-S	5Lt	02 pcs.
NAT4090.10B-S	10Lt	
NAT4090.20B-S	20Lt	

TRANSPARENT		
Code	Desc.	Pack.
NAT4090-S	750ml	06 pcs.
NAT4091-S	5Lt	02 pcs.
NAT4090.10-S	10Lt	
NAT4090.20-S	20Lt	

## Universal Stain HOLZFARBE

A range of liquid Universal Stains ideal for colouring raw wood furniture or other interior surfaces. It replaces the traditional aniline dyes, avoiding the need for preliminary mixing and the inhalation of harmful powders. The product is concentrated and can be used as it is to get very deep colours or can be diluted up to a ratio of 1:6 with water, spirit or NC Thinner for more delicate effects. Holzfarbe offers great depth and brightness and can also be used to tint clear lacquers.



### Recommendations for application:

Add some drops to the clear product to be coloured, but avoid excess. Always make a preliminary test to verify the final effect.



Code	Desc.	Pack.
3000XX	250 ml	12 pcs.
3050XX	500 ml	12 pcs.
3100XX	1 Lt	12 pcs.
3005XX	5 Lt	02 pcs.

## Holzfarbe Colours chart

120 Yellow



134 Green



122 Orange



125 Fire Red



52 Oak



17 Teak



53 Light Walnut



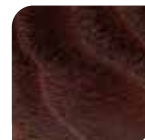
62 Mahogany



63 Dark Walnut



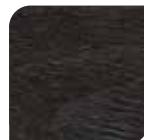
58 Rosewood



140 Blue



60 Black



Available also: Cherry 30, Medium Walnut 59 and Wenge 146



# TECHNICAL COMPLEMENTS

## IMITATION GOLD/SILVER/COPPER POWDER

Extra fine metal powder (alloys or pure metals), ideal for decorative metal effects. Easy to use, they can be inter-mixed to achieve multiple shades. The powders can be used in several Borma products of including oils (e.g. Hard Furniture Oil), waxes (e.g. Holzwachs, Antikwachs, Wax Oil 7030) and lacquers (e.g. Shellac Polish). Suitable to make metal patinas and finishes for application by brush or rag, to complete the decoration of interior surfaces.



### Recommendations for application:

Mix only the amounts required at the time of use. Do not mix with waterbased products.

Copper Powder		
Code	Desc.	Pack.
CDO4643	250 gr.	06 pcs.
CDO4643.1	1 Kg.	06 pcs.
CDO4643.5	5 Kg.	02 pcs.
CDO4643.25	25 Kg.	

Imitation Silver Powder		
Code	Desc.	Pack.
CDO4645	250 gr.	06 pcs.
CDO4645.1	1 Kg.	06 pcs.
CDO4645.5	5 Kg.	01 pcs.
CDO4645.25	25 Kg.	

Imitation Ducat Gold Powder		
Code	Desc.	Pack.
CDO4644	250 gr.	06 pcs.
CDO4644.1	1 Kg.	06 pcs.
CDO4644.5	5 Kg.	02 pcs.
CDO4644.25	25 Kg.	

Imitation Gold Powder		
Code	Desc.	Pack.
CDO4642	250 gr.	06 pcs.
CDO4642.1	1 Kg.	06 pcs.
CDO4642.5	5 Kg.	02 pcs.
CDO4642.25	25 Kg.	

## Extra Strong Wax Remover RADIKAL ABWACHSER

A professional-use product based on pure, non-corrosive thinners. Ready for use it is ideal for the cleaning of all wooden surfaces. It dissolves the old layers of wax quickly and effectively removing dirt from the wood without damaging the original coating. In decoration it is used to remove residual waterbased Goldsize and to antique the surfaces treated with Gold Leaf in a gentle, natural and refined way. Perfect also for cleaning brushes. Available also in spray version.



### Recommendations for application:

To antique golden surfaces, rub with a cotton wad damped with the product until the desired effect is achieved. For intensive cleaning it is possible to use the product with a rag or with steel wool.

Code	Desc.	Pack.
0042	250 ml.	12 pcs.
0043	500 ml.	12 pcs.
0044	1 Lt.	12 pcs.
0045	5 Lt.	2 pcs.
0046	400 ml. spray	12 pcs.





## Softwax Sticks QUICKFILLER

Used to repair damages and other small surface imperfections, Quickfiller is extremely easy to use and ideal for the creation of scratched effects in Shabby style. Based on wax and mineral pigments, free from solvents, silicones and other oily materials, it can be over-coated with all kinds of lacquer. Available in over one hundred colours.



### Recommendations for application:

Apply in thin or thick layers to easily tear away Shabby paint and create various degrees of scratched, build-up or rub-through effects.



Code	Desc.	Pack.
1XXX	Stick da 30 gr.	10 pcs.
1XXXL	Stick da 15 gr.	20 pcs.
1XXXBL	Stick blister	12 pcs.

## Natural Mineral Powder FRENCH GYPSUM

Based on extra fine mineral powders, French Gypsum is generally used in gilding technique and in traditional painting to get extremely smooth basecoats. In Shabby decoration it can be added to Shabby Provence, in the desired quantity, to increase its thickness. With a pasty texture, almost like a putty, Shabby paint can be used to obtain reliefs and other beautiful 3D effects.



### Recommendations for application:

Add French gypsum to Shabby paint in small quantities, possibly pouring it little by little through a sieve, until the desired texture is achieved.



Code	Desc.	Pack.
CDO6563	1 Kg.	6 pcs.
CDO6566	25 Kg.	

## Natural Glue in Pearl Form BONE GLUE

A brown-yellow solid in pearl form, obtained from animal extracts and traditionally used by restorers and carpenters to achieve a strong and elastic glue. In Shabby decoration it can be used as a basecoat on raw or pre-painted wood before the application of Shabby paint to get a fully natural craquelé effect. It is used after melting and diluting in hot water.



### Recommendations for application:

Apply the product, melted in hot water (1:10) as a basecoat on raw or pre-painted wood before Shabby Provence to get the craquelé effect.



Code	Pack.
CDOCOLLAP	1 Kg.
CDOCOLLAP25	25 Kg.



# PATINAS & AGING PRODUCTS



## Ageing Vehicle HOLZ ANTIX 2008

A colourless waterbased vehicle used on woods with high tannin content to get an instant aged effect. The intensity of the effect shown by the darkening of the colour, depends on the natural content of tannins of the wood. It is not a stain. It can be tinted with the special waterbased Mordant Concentrates. If overcoated with waterbased products it can show yellowing phenomena. To avoid yellowing we recommend oil-based finishes, waxes or traditional products as topcoats.



### Recommendations for application:

Apply the product on raw wood using synthetic brushes or sponges. A preliminary test is always recommended to verify the final effect, which is directly related to the wood. To get a lighter effect it is possible to dilute the product in water, in the desired ratio.

+5°C  
+30°C



Code	Desc.	Pack.
3720	1 Lt.	12 pcs.
3721	5 Lt.	02 pcs.
3722	25 Lt.	

## Dyes MORDANT ACTIVE STAIN CONCENTRATES

Concentrated liquid dyes in water solution specifically for colouring raw wood used in combination with the different waterbased vehicles in the Borma range and in particular with Holz Antix 2008 and TP1050 Vehicle for Positive Stains. They provide great depth and opacity. The colours are available in 100 ml sized standard bottles. The final colour is dependent on the wooden background.



### Recommendations for application:

To avoid mis-tinting it is recommended to add the concentrates to the clear vehicle drop by drop till the right intensity is achieved. Always make a preliminary test to verify the final effect.

+5°C  
+30°C



Code	Desc.	Pack.
CW2XXX	100 ml	12 pcs.

## Colour Chart



14/56 ANT Ivory



14/6 ANT Beige



14/9 ANT Silica



14/37 ANT Silk Grey



14/12 ANT Olive



14/38 ANT Quartz



14/10 ANT Stone



14/4 ANT Aged Brown



14/2 ANT Aged



14/14 ANT Cognac



14/1 ANT Natural



14/46 ANT Dark Aged Brown



14/21 ANT Dark



14/22 ANT Burnt Wood



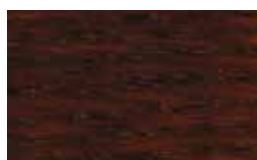
14/13 ANT Aged Pink



14/44 ANT Rust



14/47 ANT Dark Rust



14/17 ANT Colonial Rosewood



14/53 ANT Green



14/57 ANT Emerald



## Ageing Patina ANTIQUÉ PATINA

A dark brown liquid patina based on Judaic bitumen traditionally used in decoration and gilding, it can also be applied on raw wood as well as on Shabby paint-finished surfaces, Gold Leaf and other finishes. Patina is ready to use, but to obtain lighter effects it can be diluted with Solvoil 06.



### Recommendations for application:

On plain surfaces apply the patina by brush or rag and remove the excess with a clean cloth. The dwell time before the removal influences the intensity of the effect. The product can be mixed with traditional Borma waxes like Antikwachs and Wax Oil 7030.



Code	Desc.	Pack.
3560	500 ml.	12 pcs.
3561	1 Lt.	12 pcs.
3562	5 Lt.	02 pcs.
3559	Spray 400ml.	12 pcs.

## Aging Patina BITUMINOUS BEESWAX

Waxy patina in paste form that combines pure wax and carnauba wax with Bitumen for the ageing of golden surfaces and other decorated items. It provides a warm tone and a soft finish, with beautiful patina effects. It decorates, nourishes, regenerates, protects and polishes the treated surfaces,



### Recommendations for application:

Apply in thin layers and polish with a wool cloth. To increase the antique effect on carvings and give more depth to mouldings, apply accurately in cavities using a brush.



Code	Desc.	Pack.
CDO6720	300 ml.	06 pcs.
CDO6721	1 Lt.	06 pcs.
CDO6721.20	20 Lt.	

## Restoring Beeswax ANTI KWACHS

Based on beeswax and carnauba wax this especially rich and high solid content wax is recommended to nourish and protect antique wood as well as for the finishing of porous surfaces like those which have been decorated with Shabby Provence. It provides extremely smooth surfaces and, when coloured, soft and natural patina effects. Available in the many shades as shown in the Antikwachs colour chart.



### Recommendations for application:

Apply in thin layers and polish with a wool cloth. The different colours can be mixed with each other. Clear Antikwachs can be used to reduce the intensity of the colour of other decorative waxes of Borma range.



Code	Desc.	Pack.
3420XX	500 ml.	06 pcs.
3450XX	5 Lt.	02 pcs.

## Antikwachs Colour chart



# PATINAS & AGEING PRODUCTS



## White Wax LIMING WAX

Based on beeswax' and carnauba wax and enriched with white mineral pigments, it decorates and protects raw or treated surfaces, enhancing the grain and other reliefs. Ideal for open-pore surfaces like oak and ash to make a natural white decapé effect or for patina effects on flat surfaces.



### Recommendations for application:

Apply in thin layers by brush or rag and polish with a wool cloth. The product is ideal to be applied on light colours of Shabby Paint, but provides beautiful effects also on more intense colours and on natural wood.



Code	Desc.	Pack.
4580	375 ml.	06 pcs.
4582	5 Lt.	02 pcs.

## Metal-Effect Wax GILDING PATINA

Based on beeswax and carnauba wax with metal powders, this patina is ideal for decoration and as a complement for gilding works. Easy to apply also on difficult areas (carvings, reliefs, joints), it is available in Silver, Gold and Ducat Gold shades..



### Recommendations for application:

Apply in thin or medium layers, depending on the aimed effect, by brush or rag, and polish with a wool cloth. It can be applied over any Shabby finish and also on golden surfaces as reviving maintenance product.



Code	Colour	Desc.	Pack.
CDO6711	GOLD	300 ml.	06 pcs.
CDO6715	SILVER	300 ml.	06 pcs.
CDO6712	DUCAT GOLD	300 ml.	06 pcs.

## Pigmented Decorative Wax DEKORWACHS

Based on bees and carnauba wax, coloured with mineral pigments, Dekorwax is ideal to emphasize Shabby effects, enhancing the structure of the surface with delicate pastel shades or it can even be applied on raw wood to enhance the grain with a natural and soft colour effect.



### Recommendations for application:

Apply in thin or medium layers, depending on the aimed effect, by brush or rag, and polish with a wool cloth. It can be applied over any Shabby finish and also on golden surfaces as reviving maintenance product.



Code	Desc.	Pack.
4585XX	375 ml.	06 pcs.
4586XX	5 Lt.	02 pcs.

## Dekorwachs Colour Chart

50 White	101 Grey	120 Yellow	126 Pink
137 Pine Green	144 Spring Blue		

## Fast Drying Metal Patina FAST PATINA

Professional product recommended for patina or decapé effects. Very fast drying, it is suitable for any kind of basecoat: polyurethane, acrylic, UV or lacquered, as well as shellac polish.

**Available in shades:** Gold 11, Gold Leaf 11/F, Warm Gold 12, Cold Gold 19, Silver 15, Silver Leaf 15/F, Copper 20, White 50, Black 60.



### Recommendations for application:

Usually applied by spray, it can equally be applied by brush on small surfaces. After a few minutes the patina is dry and can be removed using an abrasive pad, steel wool or fine sandpaper.

For very accurate finishes a transparent intermediate layer, basecoat or topcoat, is recommended before the application of Patina.



Code	Desc.	Pack.
CDO7002XX	1 Lt.	06 pcs.
CDO7002XX.5	5 Lt.	02 pcs.
CDO7002XX.25	25 Lt.	

## Waterbased Lacquer for Furniture NATURAQUA MOBILACK 1-2K

Eco-compatible finish for the treatment of furniture. It respects the environment and workers' health, thanks to its water base is almost VOC free. Mobilack develops very high levels of protection against wear and abrasion of traditional wooden surfaces, already sanded or restored. High performance with the ease of use of a single-component/ catalyzed technology. Available in deep matt, matt, semi-gloss and glossy sheen levels.



### Recommendations for application:

Can be used as a single-component product or can be catalysed with Borma Catalyst NAT410X-2K in a ratio: 10: 1. Approx yield: 10-12m<sup>2</sup>/Lt.

CATALYST NAT4100-2K		
Code	Desc.	Pack.
NAT4099-2K	100 ml	12 pcs.
NAT4100-2K	250 ml	12 pcs.
NAT4101-2K	500 ml	12 pcs.
NAT4105-2K	1 Lt	06 pcs.
NAT4103-2K	2,5 Lt	02 pcs.
NAT4104-2K	5 Lt	02 pcs.
Code	Desc.	Pack.
NAT4122-XX	1 Lt	06 pcs.
NAT4123-XX	5 Lt	02 pcs.
NAT4124-XX	10 Lt	
NAT4125-XX	20 Lt	



## Waterbased Lacquer for Furniture 1-2K INVISIBLE TOUCH

A waterbased lacquer with an "invisible" effect. It gives a very modern ultra-matt appearance and does not alter the natural look of the raw wood whilst still giving a high level of surface protection. Invisible Touch is the perfect choice where the unique, natural appearance of the wood needs to remain unaltered but still have a high level of protection.



### Recommendations for application:

Apply preferably by spraying after catalysis with NAT4100-2K, catalyst for water-based paints and 10% dilution in water. Approx yield: 10-12m<sup>2</sup>/Lt.

CATALYST NAT4100-2K		
Code	Desc.	Pack.
NAT4099-2K	100 ml	12 pcs.
NAT4100-2K	250 ml	12 pcs.
NAT4100-2K	500 ml	12 pcs.
NAT4105-2K	1 Lt	06 pcs.
NAT4103-2K	2,5 Lt	02 pcs.
NAT4104-2K	5 Lt	02 pcs.

Code	Desc.	Pack.
NAT4130	1 Lt	06 pcs.
NAT4131.5	5 Lt	02 pcs.
NAT4132	10 Lt	
NAT4133	20 Lt	



## Oil for Furniture HARD FURNITURE OIL - HARDWAX FURNITURE OIL

Based on natural oils and enriched with high quality resins and waxes, it provides a great protection against scratches and surface damages and has a pleasant natural satin effect. Suitable to protect raw wood or Shabby Provence with a delicate amber tone. Available in 5, 10, 30, 60, 90 gloss and in a matt waxy version.



### Recommendations for application:

It can be applied by brush, rag, handroller or spray. For a natural, enriched effect any excess should be removed using a soft cloth. Allow to dry completely before using the treated surface.



53160-1/2  
68861-1



Hardwax Furniture Oil		
Code	Desc.	Pack.
4907	1 Lt.	06 pcs.
4908	5 Lt.	02 pcs.
4914	10 Lt.	
4909	20 Lt.	

Hard Furniture Oil		
Code	Desc.	Pack.
4902-XX	1 Lt.	06 pcs.
4903-XX	5 Lt.	02 pcs.
4902.10-XX	10 Lt.	
4904-XX	20 Lt.	

## Waxy Blend for Furniture HARD WAX OIL 7030

Based on natural waxes and oils, the product combines the ease of application of waxes and the resistance properties of oils. Colourless, it is used in decoration to shade the effects realized with pigmented waxes, providing more protection and resistance to the coated surfaces.



### Recommendations for application:

Spread by rag or brush in thin and uniform layers, allow to penetrate for 5-10 minutes and then polish excess away with a soft cloth.



Code	Desc.	Pack.
*2960.125XX	125 ml.	06 pcs.
2960XX	750 ml.	06 pcs.
2965XX	2,5 Lt.	02 pcs.
2965.5XX	5 Lt.	02 pcs.
2970XX	10 Lt.	

\* this can size is available on request



# FINISHES

## Shellac Lacquer SHELLAC POLISH

Traditional lacquer, ready for use, based on natural high quality shellac and available in the versions: Blonde, with natural waxes, and wax-free in colours Orange, Ruby, Black and Transparent. Beside classical shellac finishes, characterised by extreme brightness and smoothness to the touch, it can be used as an insulator and as a protecting topcoat after leafing.



### Recommendations for application:

Traditionally applied by buffer for the finishing of furniture, this lacquer can be spreaded also by brush to insulate and protect small areas.

Blonde French Polish		
Code	Desc.	Pack.
0001	150 ml.	12 pcs.
0002	500 ml.	12 pcs.
0003	1 Lt.	12 pcs.
0004	5 Lt.	02 pcs.

Shellac Polish - Dewaxed			
Code	Description	Desc.	Pack.
0002AR	- Orange	500 ml.	12 pcs.
0003AR	- Orange	1 Lt.	12 pcs.
0004AR	- Orange	5 Lt.	02 pcs.
0002RU	- Ruby	500 ml.	12 pcs.
0003RU	- Ruby	1 Lt.	12 pcs.
0004RU	- Ruby	5 Lt.	02 pcs.

Shellac Polish - Dewaxed			
Code	Description	Desc.	Pack.
0002NE	- Garnet black	500 ml.	12 pcs.
0003NE	- Garnet black	1 Lt.	12 pcs.
0004NE	- Garnet black	5 Lt.	02 pcs.
0002TR	- Transparent	500 ml.	12 pcs.
0003TR	- Transparent	1 Lt.	12 pcs.
0004TR	- Transparent	5 Lt.	02 pcs.

## Finishing Lacquer ZAPON LACK

A glossy, solvent-based, finishing lacquer with good resistance for golden surfaces. Formulated in respect of traditions, single pack, it is ready for use and easy to apply. It provides a pleasant aesthetic look.



### Recommendations for application:

It can be applied by spray or by brush and protects surfaces that have been decorated with imitation gold, silver or bronze leaf.

Code	Desc.	Pack.
CDO6950	500 ml.	12 pcs.
CDO6951	1 Lt.	12 pcs.
CDO6952	5 Lt.	02 pcs.
CDO6953	25 Lt.	

## Decorative Gold and Copper Lacquers for Interiors

### SHINE-DECOR GOLD LACK / SHINE-DECOR COPPER LACK

Metallic lacquers with special extra-bright effect, suitable for decorative purposes and ideal for both novices and professional users making manual brush applications. Ideal for the decoration of valuable objects, frames, furniture and in general for wood, gypsum, metal and plaster that are not subjected to abrasion. Overcoating is not recommended so as not to compromise the final effect, though a light fixing is possible. Gold is available in the following shades: Rich, Pale, Rich Pale, Ducat, Gold Chrome, Silver Chrome. Shine Décor Copper Lack is in Copper colour.



### Recommendations for application:

Apply by brush for the artistic decoration of small details. The highest aesthetic result is achieved on non- absorbent surfaces: in case of raw wood or gypsum a preliminary insulator (e.g. CDO6100 Intermediate insulator for Gilding) is recommended.

Code	Desc.	Pack.
CDO6960XX-90	125 MI.	06 pcs.
CDO6961XX-90	375 MI.	06 pcs.
CDO6962XX-90	750 MI.	06 pcs.
CDO6963XX-90	2,5 Lt.	02 pcs.
CDO6964XX-90	5 Lt.	02 pcs.
CDO6964.20XX90	20 Lt.	





### Finishing Lacquer for Interiors - Gold, Copper and Silver GOLD LACK PRO / COPPER LACK PRO / SILVER LACK

Metal lacquers for spray application, with high brightness and resistance. Thanks to their specific formulation, they can be over-lacquered and therefore can be considered as proper finishing for interiors, for various purposes and backgrounds: wood, metal, gypsum, plaster and so on. Designed for professional use they can be used also by brush. Gold is available in the following shades: Rich, Pale, Rich Pale, Ducat. Copper Lack Pro is in Copper colour. Silver Lack is in Silver colour and is suitable also for exteriors.



#### Recommendations for application:

Apply by brush for the artistic decoration of small details or by spray to cover large areas. The highest aesthetic result is achieved on non-absorbent surfaces: in case of raw wood or gypsum a preliminary insulator (e.g. CDO6100 Intermediate insulator for Gilding) is recommended.

GOLD LACK & COPPER LACK PRO		
Code	Desc.	Pack.
CDO6980XXX-90	125 ml.	06 pcs.
CDO6981XXX-90	375 ml.	06 pcs.
CDO6982XXX-90	750 ml.	06 pcs.
CDO6983XXX-90	2,5 Lt.	02 pcs.
CDO6984XXX-90	5 Lt.	02 pcs.
CDO6984.20XXX90	20 Lt.	

SILVER LACK		
Code	Desc.	Pack.
CDO6960AR-90	125 ml.	06 pcs.
CDO6961AR-90	375 ml.	06 pcs.
CDO6962AR-90	750 ml.	06 pcs.
CDO6963AR-90	2,5 Lt.	02 pcs.
CDO6964AR-90	5 Lt.	02 pcs.
CDO6964.20AR-90	20 Lt.	

### Waterborne Lacquers for Interiors - Gold, Copper and Silver NATURAQUA GOLD LACK / NATURAQUA COPPER LACK / NATURAQUA SILVER LACK

Metallic, odourless and ecological waterborne lacquers with high brightness and resistance and suitable for the decoration of interior surfaces. Gold is available in the following shades: Rich, Pale, Rich Pale, Ducat. Naturaqua Copper Lack is in copper colour. Naturaqua Silver Lack is in silver colour and is suitable also for exteriors.



#### Recommendations for application:

Apply by brush for the artistic decoration of small details or by spray to cover large areas. The highest aesthetic result is achieved on non-absorbent surfaces: in case of raw wood or gypsum a preliminary insulator (e.g. NAT4090 Naturaqua Wood Sealer) is recommended.



NAT.GOLD LACK / NAT. COPPER LACK		
Code	Desc.	Pack.
NATCDO6960XX-90	125 ml.	06 pcs.
NATCDO6961XX-90	375 ml.	06 pcs.
NATCDO6962XX-90	750 ml.	06 pcs.
NATCDO6963XX-90	2,5 Lt.	02 pcs.
NATCDO6964XX-90	5 Lt.	02 pcs.
NATCDO6964.20XX	20 Lt.	

NAT.SILVER LACK		
Code	Desc.	Pack.
NATCDO6960AR-90	125 ml.	06 pcs.
NATCDO6961AR-90	375 ml.	06 pcs.
NATCDO6962AR-90	750 ml.	06 pcs.
NATCDO6963AR-90	2,5 Lt.	02 pcs.
NATCDO6964AR-90	5 Lt.	02 pcs.
NATCDO6964.20AR	20 Lt.	



# BORMA GLASS

## Glass-Effect Pouring & Casting Resin Borma Glass 2k

+10°C  
+30°C

A two-component, ultra-clear epoxy pouring and casting resin of high transparency and outstanding resistance properties, specifically designed to fill natural cracks, cavities, fissures or routed surfaces for the artistic creation of furniture and decorative pieces.

Using special moulds or assembled frames to prevent leakage Borma Glass 2K is ideal for 'River Tables', 'Chopping Boards' and other structures where an eye-catching filling solution is required that imparts strong structural stability. Borma Glass 2K is sandable, polishable and overcoatable.



### Recommendations for application:

Catalysis at 40%

See Technical Data Sheet for guidance and information.

			Hardener		
Code	Desc.	Pack.	Code	Desc.	Pack.
1930	1kg	06 pcs.	1937.400K	400gr	06 pcs.
1931	5kg	02 pcs.	1937.2K	2Kg	02 pcs.
1932	10kg	01 pcs.	1937.4K	4Kg	01 pcs.
1938	1kg+400gr kit	01 pcs.			







## Concentrate Dyes for Epoxy resin Colourants for Borma Glass 2k

Liquid dye concentrates and powders supplied ready to add, should be dispersed in small quantities inside the Borma Glass resin, before or after catalysis. Light stable, they can be mixed together and added in different percentages according to the desired effects. They enable both subtle light shades and very intense colours.



### Recommendations for application:

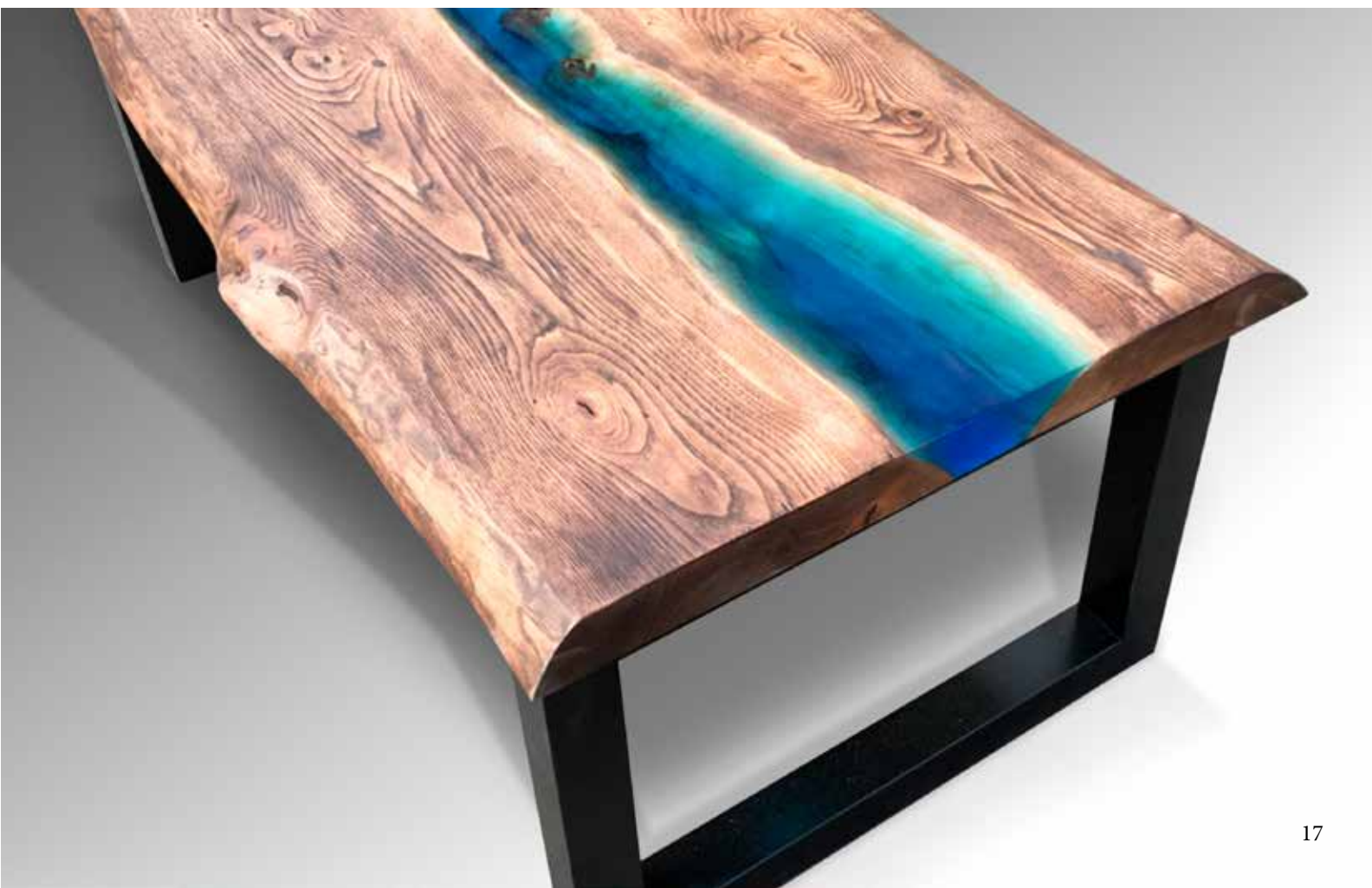
Available in different colours: Base, Fluo, Metal/Pearl, Glitter.

Base Colours	
COPU10051	30 ml white
COPU10063	30 ml yellow
COPU10407	30 ml green
COPU10416	30 ml violet
COPU10425	30 ml red
COPU10506	30 ml blue
COPU10702	30 ml black

Metals Colours	
COMT20011	2,5 gr gold
COMT20015	2,5 gr silver
COMT20020	2,5 gr copper

Glitter Colours	
COGL20011	2,5 gr gold glitter
COGL20015	2,5 gr silver glitter
COGL20020	2,5 gr copper glitter

Fluo Colours	
COFL20051	2,5 gr yellow fluo
COFL20114	2,5 gr orange fluo
COFL20135	2,5 gr pink fluo
COFL20144	2,5 gr light blue fluo
COFL20407	2,5 gr green fluo







# Point

Authorised dealer









**BORMA WACHS**<sup>®</sup>  
Wood Professional Cosmetics  
& Eco-Finishes



Restauro - Restoration - Restaurierung  
Материалы для реставрации



Ritocco e stucchi - Touch-Up and Fillers - Retusche und Kitte  
Ремонт покрытий



Esterni - Exteriors - Aussenbereich - Экстерьеры



Interni - Interiors - Innenbereich - Интерьеры



Doratura - Gilding - Vergoldung - Золочение



Decorazione - Decoration - Dekoration - Декорирование



Borma Pro



Borma Colors



[www.bormawachs.com](http://www.bormawachs.com)

**B.P.S. s.r.l.**

Via Industria, 4 - 30029 San Stino di Livenza  
Venezia Italy  
Tel. +39 0421 951900 - Fax +39 0421 951902

Wood Professional Cosmetics & Eco-Finishes